

LABNAF 7 ADDIN INSTALLATION

CONTENTS

Labnaf Addin - Features Overview	3
Labnaf Addin - Package Content	4
Doc (Folder)	4
Installer (Folder).....	4
EASettings.... and SetLoadMdgFrom... Folders	4
Installing the Labnaf Addin on your Personal computer	4
Prerequisites for installing the Labnaf Addin	4
Install the Labnaf Addin	5
Add a License	5
Open a Labnaf Repository.....	5
Set up your EA workspace layout for Labnaf	5
Installing Sparx Systems' EA and the Labnaf Addin as distributed package(s)	5
Deploy Sparx System's EA.....	5
Run the installer.....	5
Enter Sparx System's EA Activation Code	5
Set the Pointer to the License Server (if you bought floating licences)	6
Further Sparx Systems' EA User Interface configuration	7
Deploy the Labnaf Addin.....	7
Run the installer.....	7
Add a Labnaf Addin license certificate	8
Fixed Labnaf licenses	8
Floating Labnaf License	8
Add a Shortcut to the Production Database on the USers' Desktop	8
Deploy the Labnaf MDG.....	8
MDG Deployment and Language Customization	9
Instant Customizations using the Labnaf AddIn.....	9
Advanced Customizations and Deployment using the Customization Workbench (Optional)	9

MDG loaded from AddIn	9
MDG loaded From Repository	9
MDG loaded from Files	10
Deploying MDG Settings to the Shared/Production Repository	10
Prolaborate Integration	12

The **Labnaf Addin** is an add-in to the Sparx Systems' Enterprise Architect modeling platform. It provides the following features:

- The Labnaf AddIn software features the Labnaf modeling language, diagrams, toolboxes, advanced portfolio management, cross-portfolio searches, structured level modeling, import/export, cascaded calculations, report/chart/diagram generation with or without template, dashboards, implicit data generation, versioning and merging, dynamic model validation, language transformation, and instant customization, dynamic diagram legend libraries, and unparalleled [metamodeling](#) capabilities.
- Labnaf software fully support the Labnaf transformation process. Users can comprehend and continuously optimize their enterprise operating model, analyze sensitive data usages, govern and secure business continuity, identify risks, envision the future, plan transformations, and describe architecture solutions using multi-dimensional viewpoints, portfolios, models, dashboards, reports, a predefined repository structure, and unparalleled productivity tools.

The Labnaf Addin comes with the following **companions**:

Labnaf MDG (XML File)

- The Labnaf MDG is the EA technology add-on that defines the Labnaf metamodel, diagrams, toolboxes, and rules, so that Sparx Enterprise Architect can natively support the Labnaf transformation framework.
- The Labnaf MDG is provided as a Sparx standard MDG XML file along with the Labnaf AddIn installer.
- You can [import the MDG to your model repository](#) so that Sparx EA can load it on startup. If the MDG is not found in the repository then the Labnaf AddIn loads the MDG either from the Labnaf AddIn or from files generated by the [Labnaf Customization Workbench](#).

Optimize EA User Experience for Labnaf

- This little console program optimizes Sparx System's Enterprise Architect user experience for Labnaf modelers.
- The program executes at the end of the Labnaf installation process, but you can re-execute it if needed e.g. in case you changed some Sparx EA configuration items by mistake.
- For detailed information about these optimizations, when they occur and how to change these, see the document called "[Optimizing EA's User Interface for Labnaf](#)".

Labnaf License Manager

- Used for registering **fixed (non-floating)** license certificates. You can instead register floating licenses if you want. Without a license, the Labnaf Addin features will be limited.
- If you want to enable additional features or if you want to collaborate using a shared model repository, please order a license then register the license as described in the [Labnaf License Management document](#).

Labnaf Repositories

See the documentation provided in the "Repositories" folder.

Labnaf Customization Workbench

If you purchase a Labnaf Addin license, you will also receive the [Customization Workbench](#).

The **Labnaf Customization Workbench** provides the following features:

- Staged customization (Dev, Test, Prod) of the language, toolboxes and diagram types using Sparx System's MDG Technologies.
- Injecting Labnaf language metamodel customizations into the Labnaf MDG. This enables dynamic modeling connector validation. It prevents users from creating connectors that are no part of the [metamodel](#).

LABNAF ADDIN - PACKAGE CONTENT

DOC (FOLDER)

- Labnaf documentation.

INSTALLER (FOLDER)

- **LabnafForSparx.msi** is used for installing the following software:
 - Labnaf Addin for Sparx
 - Optimize EA User Experience for Labnaf
 - Labnaf License Manager
- Labnaf MDG XML file.

64-bit and 32-bit programs

- Starting from Labnaf versions 6 and onwards, the program is 64-bit and is compatible with the 64-bit versions of Sparx EA.
- Labnaf versions earlier than version 6 are 32-bit programs compatible with 32-bit versions of Sparx EA.
- You cannot mix the 32-bit and 64-bit versions of Sparx EA and the Labnaf Addin.

EASSETTINGS... AND SETLOADMDGFROM... FOLDERS

- For Software Distribution teams who want to further customize Sparx System's registry and configuration settings.

INSTALLING THE LABNAF ADDIN ON YOUR PERSONAL COMPUTER

First of all, please read the [systems requirements](#).

PREREQUISITES FOR INSTALLING THE LABNAF ADDIN

The [Sparx Systems' Enterprise Architect](#) software must be already installed on your computer.

If you are using the Labnaf Addin Lite edition, then Sparx EA Professional edition will suffice. More information is available [here](#).

If you don't have any Sparx EA license at all then you can [download the Sparx EA trial version](#) (any edition).

INSTALL THE LABNAF ADDIN

Prerequisite: Uninstall any existing Labnaf Addin, if it was previously installed (Start menu > Settings > Apps).

Go to the “**Installer**” folder.

Double-click on the installer (MSI) and follow the instructions.

ADD A LICENSE

If you want to enable additional features or if you want to collaborate using a shared model repository, please order a license then register the license as described in the [Labnaf License Management document](#).

OPEN A LABNAF REPOSITORY

Labnaf software comes with a “**Repositories**” folder that contains repositories along with related documentation.

To open a Labnaf repository, you just need to double click on a Labnaf repository file.

SET UP YOUR EA WORKSPACE LAYOUT FOR LABNAF

This feature automatically opens, filters and organizes all the EA windows and ribbons that are useful for Labnaf users (architects, strategists, portfolio managers, project managers, risk managers...).

Select the “**Start**” ribbon.

Select the option “**Workspaces > Manage Workspaces > My Workspaces > Labnaf Workspace Layout**”.

Press the “**Apply**” button.

INSTALLING SPARX SYSTEMS’ EA AND THE LABNAF ADDIN AS DISTRIBUTED PACKAGE(S)

The Sparx EA Client and the Labnaf add-in need to be both deployed on users’ computers.

Have a look at the [Labnaf - Deployment on User’s Computer](#) diagram showing how the components need to be deployed (Related item: [Labnaf - Deployment on Servers](#))

Then read the following sections providing instructions for creating the installation package(s) for Sparx System’s EA and the Labnaf Addin.

DEPLOY SPARX SYSTEM’S EA

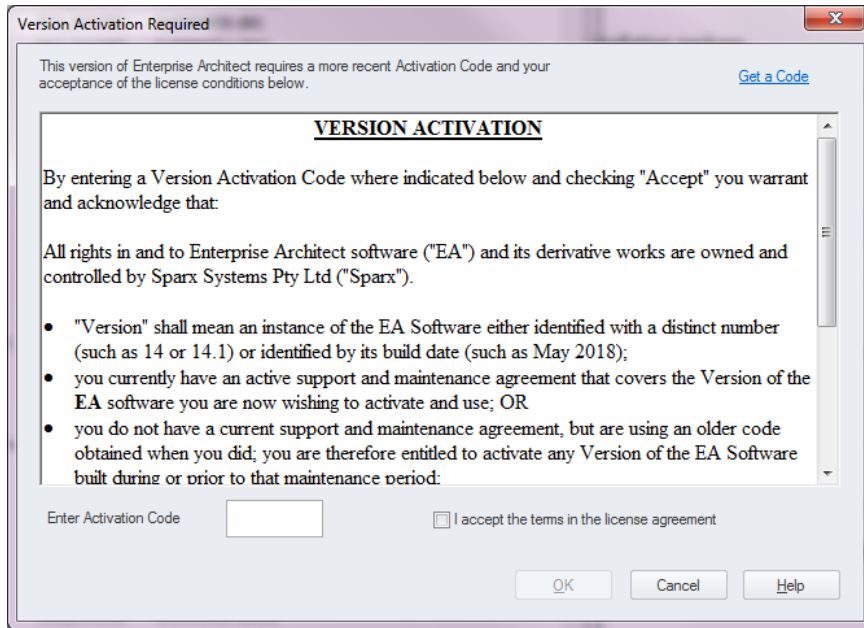
RUN THE INSTALLER

Run **easetupfulIXX.msi** (Sparx System’s EA installer).

ENTER SPARX SYSTEM’S EA ACTIVATION CODE

MANUAL STEPS

A Version Activation Code must be provided when a new version of Sparx is installed.



AUTOMATED SET UP BY UPDATING REGISTRY KEY(S)

Key Name = "HKEY_CURRENT_USER/Software/Sparx Systems/EA400/EA/Settings/ActivationCode"

Key Value = XXXX

Key Name = "HKEY_CURRENT_USER/Software/Sparx Systems/EA400/EA/Settings/ ActivationDate"

Key Value = YYYY-MM-DD HH:MM:SS

SET THE POINTER TO THE LICENSE SERVER (IF YOU BOUGHT FLOATING LICENCES)

INTRODUCTION

The Keystore Service is designed for use with Floating Licenses* of Sparx Systems products. The Keystore Service provisions floating license keys by interacting with Enterprise Architect instances via a network protocol. It supports detailed logging and auditing of license usage, password or domain authenticated access to the keystore and an administrative dashboard for monitoring licenses keys.

The [Sparx Systems Keystore Service \(SSKS\)](#) helps you to manage the use of registration keys issued with the Floating Licenses purchased for Enterprise Architect Corporate, Business & Software Engineering, Systems Engineering, and Ultimate editions, and for related MDG products.

Using the SparxSystems Keystore Service application, an administrator can create a key store in a network file location that enables licenses with a finite (administrator-defined) issue period to be assigned to specific workstations.

The key store also enables the administrator to quickly determine which user checked out which specific key, and to see the date on which the key expires.

The end-user's Sparx Client configuration can point to a License Server machine name that runs a single instance of a [Sparx Keystore Service](#).

PREREQUISITES

A. Install the Keystore Service by running the "SparxKeystoreService.exe" on the application server.

The installer for the Keystore Service service includes two primary software components:

1. Sparx Systems Keystore Service - A TCP/IP service to be installed on the server to which end users connect for accessing licenses.
2. Keystore Manager - An application that includes the administrative dashboard for monitoring and managing keys in your remote or local keystores.

B. Register the shared keys (i.e. the purchased floating licenses) into the keystore service

The management of shared keys within a keystore is performed through the *Keystore Manager* application which operates through the Sparx Systems KeyStore dialog

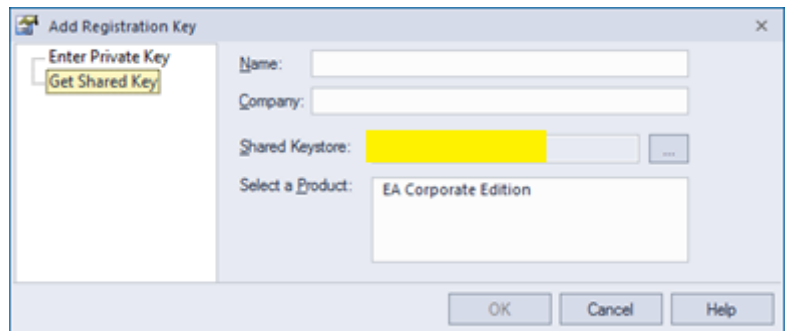
MANUAL STEPS

Select the option **Help / Register and Manage License Key(s) / Add Key / Get Shared Key...**

Press the button next to **“Shared Keystore”** and enter the following address of the Sparx Keystore Server:

“sks:// ...”

Finally, select a product by clicking on **« EA XXX Edition »**



AUTOMATED SET UP BY UPDATING REGISTRY KEY(S)

```
[HKEY_CURRENT_USER\Software\Sparx Systems\EA400\EA\OPTIONS]
"SSKSAddress"="sks://... "
```

The following values are unchanged (same as in existing package)

```
"SSKSPassword"="service password (encrypted) "
"SKT"=dword:00000001
"AutoCheckoutEx"=hex:02,00,00,00
```

For further information see the following document on the Sparx web site: [“Deployment of Enterprise Architect.PDF”](#), an in particular page 21, section *“Remote Floating License Installation”* / *“Example registry settings for the service based keystore”*.

FURTHER SPARX SYSTEMS’ EA USER INTERFACE CONFIGURATION

The Labnaf installer automatically optimizes EA’s user interface for Labnaf.

You can further refine this configuration. See [Optimizing User Interface for Labnaf](#).

DEPLOY THE LABNAF ADDIN

RUN THE INSTALLER

Run **LabnafForSparx.msi**.

ADD A LABNAF ADDIN LICENSE CERTIFICATE

See the [Labnaf License Management](#) documentation for detailed information.

FIXED LABNAF LICENSES

Copy a fixed license certificate file to the folder **%APPDATA%\Roaming\Labnaf\Licenses**

A license certificate file name has a “.Inlic” extension. It looks like this:

```
00002_Labnaf AddIn_Professional_(5u)_(0e)_(2023-06-27)_{d2d27aea-201f-4b88-88ab-562450fbdf2}_(1)d.Inlic
```

FLOATING LABNAF LICENSE

Register the shared keys (i.e. the purchased license numbers) into the keystore service (same approach as for Sparx EA floating licences).

ADD A SHORTCUT TO THE PRODUCTION DATABASE ON THE USERS' DESKTOP

Add, on user's desktop, a shortcut to the “**Labnaf_Prod_Repository.eap**” file.

DEPLOY THE LABNAF MDG

By default the MDG is loaded from the Labnaf AddIn. If you chose this option, you are all set.

Otherwise, please read the section below...

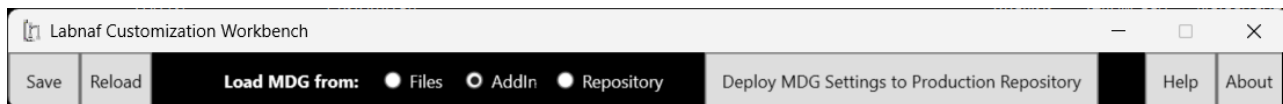
INSTANT CUSTOMIZATIONS USING THE LABNAF ADDIN

Instant customizations (instant=a few seconds) are performed using Labnaf Addin features including the Instant Metadata Manager and the Instant Metamodel Manager.

ADVANCED CUSTOMIZATIONS AND DEPLOYMENT USING THE CUSTOMIZATION WORKBENCH (OPTIONAL)

Advanced customizations are performed by the Labnaf administrator using the Customization Workbench. Advanced customizations ADD TO THE INSTANT CUSTOMIZATIONS FEATURES which are still available using the Labnaf Addin.

The first step is to **define where the Labnaf MDG needs to be loaded from.**



MDG LOADED FROM ADDIN

This is the simplest and default configuration. By default the MDG is loaded from the Labnaf AddIn. In this case you don't need the Customization Workbench.

MDG LOADED FROM REPOSITORY

IMPORTANT: This feature requires Labnaf Build B0702 or later on all computers accessing the repository.

If you store the MDG in the repository, it will be automatically picked up by Sparx EA and by the Labnaf AddIn as soon as Sparx EA starts and connects to the repository.

Key benefits: 1° Sparx EA users who do not have the Labnaf Add-In installed can still view Labnaf portfolios and diagrams stored in a Labnaf repository. 2° Better features integration with Prolaborate.

The Labnaf MDG that needs to be imported to the production repository is available in the AddIn "Installer" folder. It is the same MDG as the one stored in the Labnaf AddIn. It can be imported to the repository either by using the "Deploy.../Import.." button in the Labnaf Customization Workbench or by [using the Sparx EA user interface](#).

Although this is not mandatory, we recommend granting read-only access to architecture content for users who do not have the Labnaf Add-In installed. This helps prevent accidental damage to the architecture, as these users do not have access to the following features:

- Preventive connection validation
- Date property format normalization (required for roadmap charts, time-series consolidation, and time-series chart generation)
- Automatic diagram name prefix generation
- Pre-filled new diagrams based on user-editable templates
- ...

MDG LOADED FROM FILES

By choosing this option you can customize (add, remove, modify) detailed MDG/language features including the language element and connector types, shapes, icons, toolboxes, diagram types, searches, workspace layout etc.

To learn more about detailed customizations using the Customization Workbench, please see the [customization documentation](#) including the “Labnaf Customization Workbench - User Guide”.

For detailed deployment information, see the diagram [Labnaf - Deployment of customized language on User’s Computer](#) (Related item: [Labnaf - Deployment on Servers](#)).

DEPLOYING MDG SETTINGS TO THE SHARED/PRODUCTION REPOSITORY

IMPORTANT: This feature requires Labnaf Build B0703 or later on all computers accessing the repository.

Once the MDG location has been set locally on the administrator’s computer, these settings can then be deployed to the shared/production repository. As a result, as soon as a Labnaf addin connects to this repository from another computer, it will automatically download and apply the global MDG settings.

Sample scenario:

- Let’s assume that your current local computer settings define that the MDG must be loaded from the Labnaf AddIn.
- But what you want is to 1) set your computer to the MDG loaded from the shared/production and 2) apply the same settings to all other users’ computers.

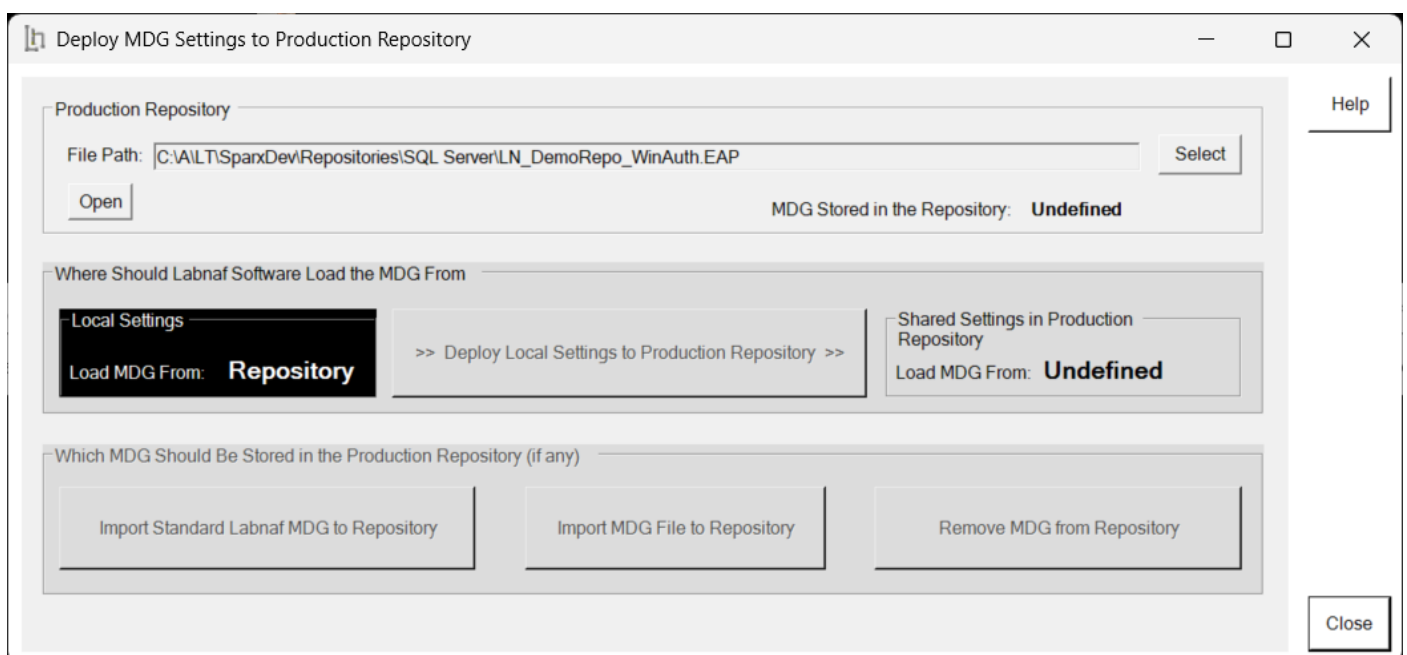
How to proceed:

Open the Customization Workbench.

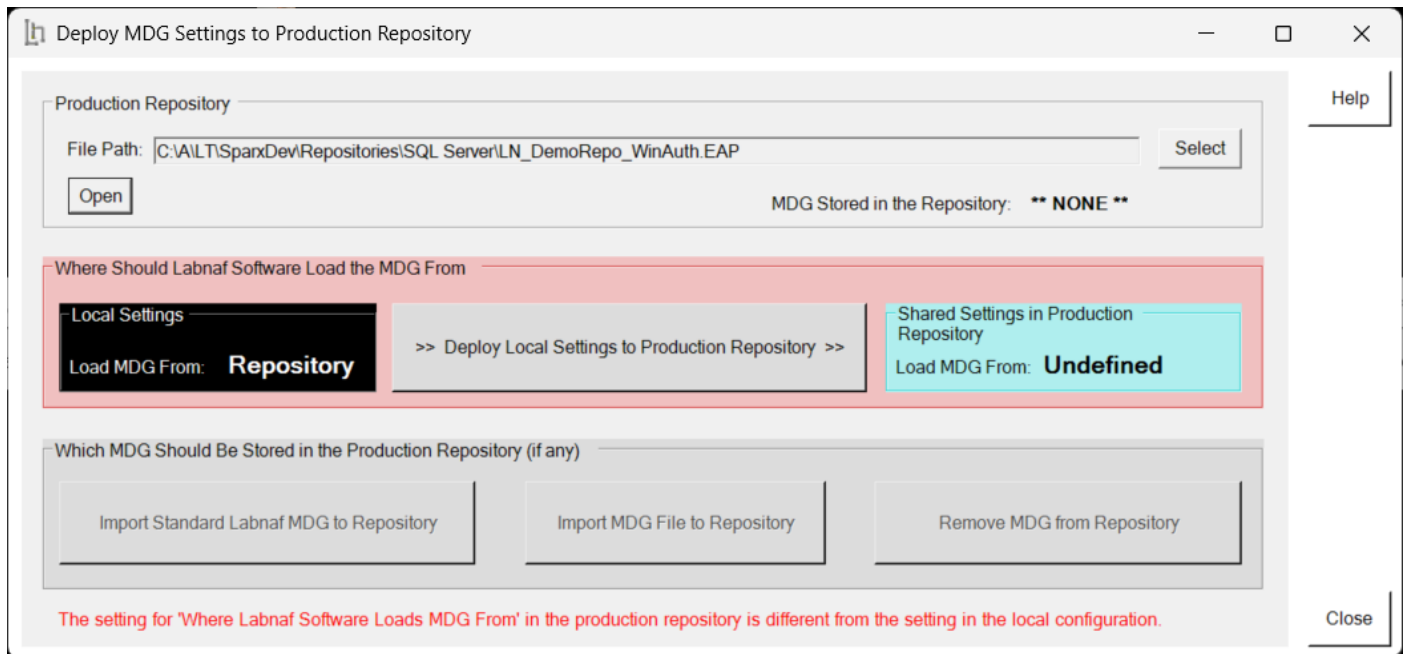


Select the **Repository** option.

Press the **Deploy MDG...** button. Then define the path to your shared/production repository EAP file by pressing the Select button.

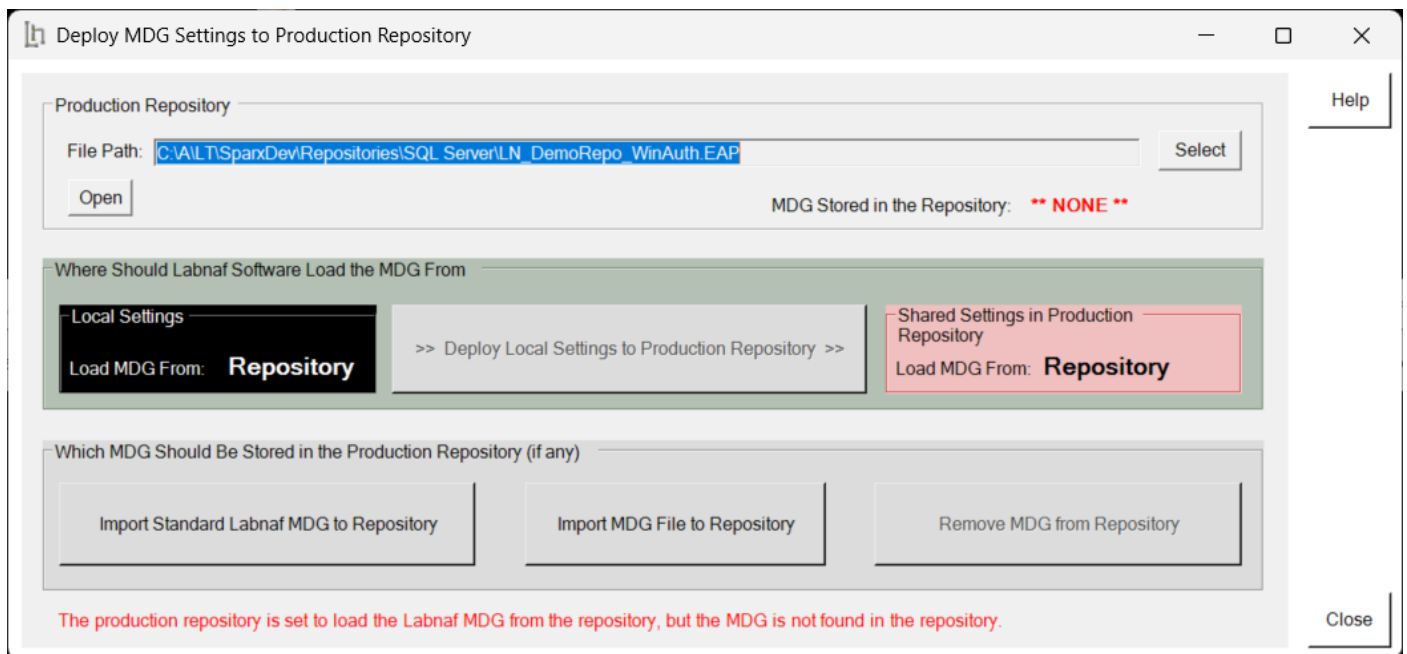


Click **Open** to open the shared/production repository.



The windows shows that the local and shared settings do not match.

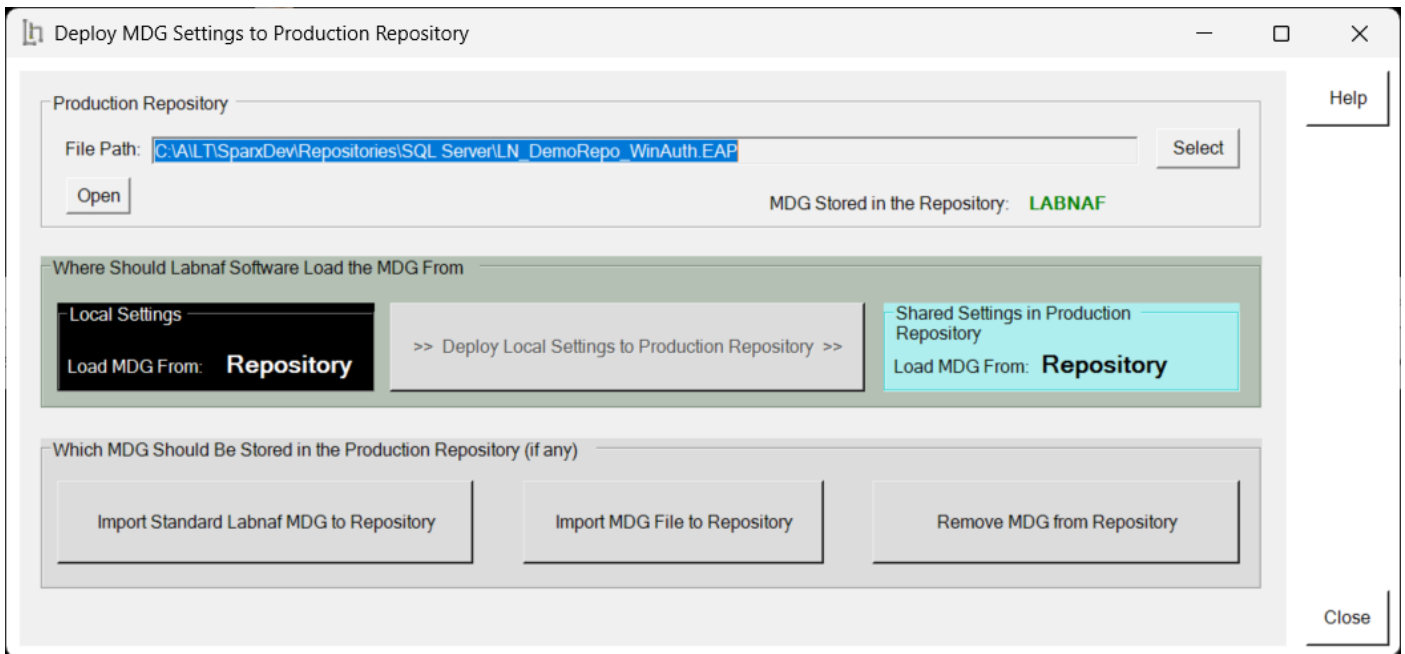
Press the **Deploy Local Settings...** button.



The window now shows that MDG is missing in the repository.

Press one of the **Import...** buttons to import the the MDG into the shared/production repository





The windows now shows that the shared/production repository settings have been synchronized with your local settings and that the MDG was loaded in the repository. *You might have one last thing to do...*

Updating the Connection Metamodel

Following these setting changes, the MDG does not yet contain your desired connection metamodel customizations.

To make this happen, simply open your shared/production repository, select the **Labnaf** > [Instant Metamodel Manager](#) option and press **Commit Last Changes**.

PROLABORATE INTEGRATION

The Labnaf MDG (customized or original) can be loaded into a Prolaborate database to enable full Labnaf–Prolaborate integration.