

LABNAF 4.1 ADDIN INSTALLATION

CONTENTS

Labnaf Addin - Features Overview.....	2
Labnaf Addin - Package Content.....	3
Doc (Folder)	3
Installer (Folder).....	3
EASettings.... (Folder).....	3
Installing the Labnaf Addin on your Personal computer	4
Prerequisites for installing the Labnaf Addin.....	4
Install the Labnaf AddIn	4
Add a License	4
Open a Labnaf Repository.....	4
Set up your EA workspace layout for Labnaf	4
Installing Sparx Systems' EA and the Labnaf AddIn as distributed package(s)	5
Deploy Sparx System's EA.....	5
Run the installer.....	5
Set Sparx System's EA Activation Code.....	5
Set the Pointer to the License Server (if you bought floating licences)	6
Further Sparx Systems' EA User Interface configuration	7
Deploy the Labnaf Addin.....	8
Run the installer.....	8
Set the Labnaf Registry Keys pointing to the MDG file and the Production Repository	8
Add a Labnaf Addin license certificate.....	9
Add a Shortcut to the Production Database on the Desktop	9

The **Labnaf Addin** is an add-in to the Sparx Systems' Enterprise Architect modeling platform. It provides the following features:

- Labnaf modeling language, diagrams and toolboxes
- Dynamic modeling connector validation (prevent users from creating connectors that are no part of the [default language metamodel](#))
- Diagram generation following templates defined in the Labnaf model repository
- Element values initialization following configuration defined in the Labnaf model repository.

The Labnaf Addin comes with the following **companions**:

Optimize EA User Experience for Labnaf

- This little console program optimizes Sparx System's Enterprise Architect user experience for Labnaf modelers.
- The program executes at the end of the Labnaf installation process, but you can re-execute it if needed e.g. in case you changed some Sparx EA configuration items by mistake.
- For detailed information about these optimizations, when they occur and how to change these, see the document called "**Optimizing EA's User Interface for Labnaf**".

Labnaf License Manager

- Used for registering **fixed (non-floating)** license certificates. You can instead register floating licenses if you want. Without a license, the Labnaf Addin features will be very limited.
- If you want to enable additional features or if you want to collaborate using a shared model repository, please order a license then register the license as described in the [Labnaf License Management document](#).

Labnaf Repositories

See the documentation provided in the "Repositories" folder.

Labnaf Customization Workbench

If you purchase a Labnaf Addin license, you will also receive the Customization Workbench.

The **Labnaf Customization Workbench** provides the following features:

- Dynamic customization of the Labnaf language metamodel. This enables dynamic modeling connector validation. It prevents users from creating connectors that are no part of the [default language metamodel](#).
- Staged customization (Dev, Test, Prod) of the language, toolboxes and diagram types using Sparx System's MDG Technologies.

LABNAF ADDIN - PACKAGE CONTENT

DOC (FOLDER)

- Labnaf documentation.

INSTALLER (FOLDER)

- **LabnafForSparx.msi** is used for installing the following software:
 - Labnaf Addin for Sparx
 - Optimize EA User Experience for Labnaf
 - Labnaf License Manager

EASETTINGS... (FOLDER)

- For Software Distribution teams who want to further customize Sparx System's registry and configuration settings.
- Note that these settings affect all Sparx EA users, not only Labnaf modelers.

INSTALLING THE LABNAF ADDIN ON YOUR PERSONAL COMPUTER

PREREQUISITES FOR INSTALLING THE LABNAF ADDIN

The [Sparx Systems' Enterprise Architect](#) software must be already installed on your computer.

If you are using the Labnaf Addin Lite edition, then Sparx EA Professional edition will suffice. More information is available [here](#).

If you don't have any Sparx EA license at all then you can [download the Sparx EA trial version](#) (any edition).

INSTALL THE LABNAF ADDIN

Prerequisite: Uninstall any existing Labnaf Addin, if it was previously installed (Start menu > Settings > Apps).

Go to the “**Installer**” folder.

Double-click on the installer (MSI) and follow the instructions.

ADD A LICENSE

If you want to enable additional features or if you want to collaborate using a shared model repository, please order a license then register the license as described in the [Labnaf License Management document](#).

OPEN A LABNAF REPOSITORY

Labnaf software comes with a “**Repositories**” folder that contains repositories along with related documentation.

To open a Labnaf repository, you just need to double click on a Labnaf repository EAP file.

SET UP YOUR EA WORKSPACE LAYOUT FOR LABNAF

This feature automatically opens and organizes all the EA windows that are useful with Labnaf.

Select the “**Start**” ribbon.

Select the option “**Workspaces > Manage Workspaces > My Workspaces > Labnaf Workspace Layout**”.

Press the “**Apply**” button.

INSTALLING SPARX SYSTEMS' EA AND THE LABNAF ADDIN AS DISTRIBUTED PACKAGE(S)

The Sparx EA Client and the Labnaf add-in need to be both deployed on users' computers.

Have a look at the [Labnaf - Deployment on User's Computer](#) diagram showing how the components need to be deployed (Related item: [Labnaf - Deployment on Servers](#))

Then read the following sections providing instructions for creating the installation package(s) for Sparx System's EA and the Labnaf Addin.

DEPLOY SPARX SYSTEM'S EA

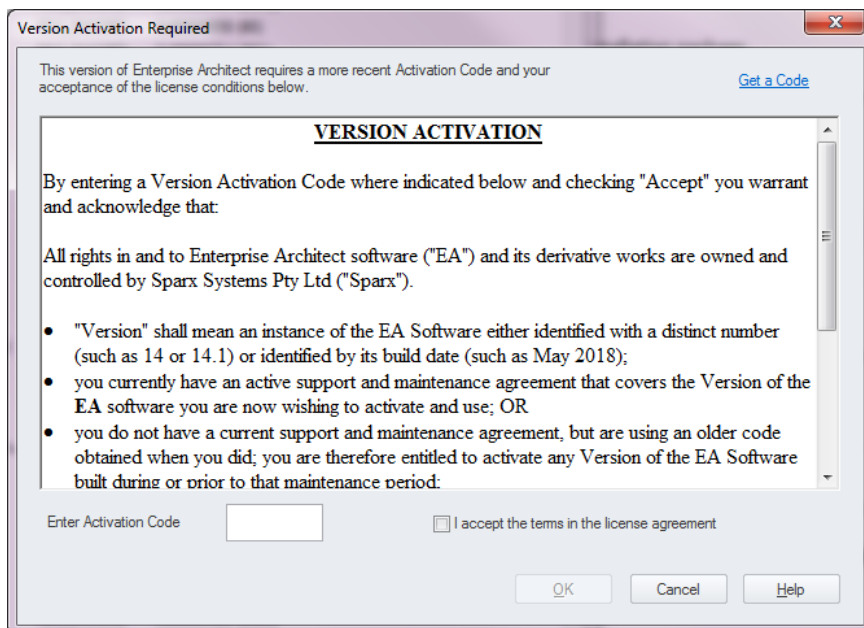
RUN THE INSTALLER

Run **easetupfullXX.msi** (Sparx System's EA installer).

SET SPARX SYSTEM'S EA ACTIVATION CODE

MANUAL STEPS

Since version 14, a Version Activation Code must be provided when a new version of Sparx is installed.



AUTOMATED SET UP BY UPDATING REGISTRY KEY(S)

Key Name = "HKEY_CURRENT_USER/Software/Sparx Systems/EA400/EA/Settings/ActivationCode"

Key Value = XXXX

Key Name = "HKEY_CURRENT_USER/Software/Sparx Systems/EA400/EA/Settings/ ActivationDate"

Key Value = YYYY-MM-DD HH:MM:SS

INTRODUCTION

The Keystore Service is designed for use with Floating Licenses* of Sparx Systems products. The Keystore Service provisions floating license keys by interacting with Enterprise Architect instances via a network protocol. It supports detailed logging and auditing of license usage, password or domain authenticated access to the keystore and an administrative dashboard for monitoring licenses keys.

The [Sparx Systems Keystore Service \(SSKS\)](#) helps you to manage the use of registration keys issued with the Floating Licenses purchased for Enterprise Architect Corporate, Business & Software Engineering, Systems Engineering, and Ultimate editions, and for related MDG products.

Using the SparxSystems Keystore Service application, an administrator can create a key store in a network file location that enables licenses with a finite (administrator-defined) issue period to be assigned to specific workstations.

The key store also enables the administrator to quickly determine which user checked out which specific key, and to see the date on which the key expires.

The end-user's Sparx Client configuration can point to a License Server machine name that runs a single instance of a [Sparx Keystore Service](#).

PREREQUISITES

A. Install the Keystore Service by running the "SparxKeystoreService.exe" on the application server.

The installer for the Keystore Service service includes two primary software components:

1. Sparx Systems Keystore Service - A TCP/IP service to be installed on the server to which end users connect for accessing licenses.
2. Keystore Manager - An application that includes the administrative dashboard for monitoring and managing keys in your remote or local keystores.

B. Register the shard keys (i.e. the purchased license numbers) into the keystore service

The management of shared keys within a keystore is performed through the *Keystore Manager* application which operates through the Sparx Systems KeyStore dialog

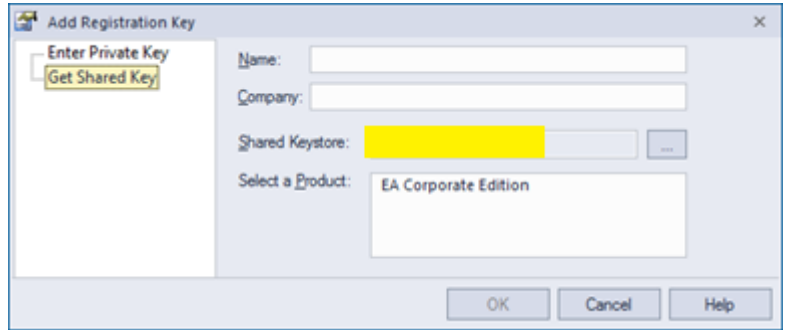
MANUAL STEPS

Select the option **Help / Register and Manage License Key(s) / Add Key / Get Shared Key...**

Press the button next to “**Shared Keystore**” and enter the following address of the Sparx Keystore Server:

“**ssks:// ...**”

Finally, select a product by clicking on « **EA XXX Edition** »



AUTOMATED SET UP BY UPDATING REGISTRY KEY(S)

```
[HKEY_CURRENT_USER\Software\Sparx Systems\EA400\EA\OPTIONS]
"SSKAddress"="ssks://... "
```

The following values are unchanged (same as in existing package)

```
"SSKSPassword"="service password (encrypted)"
"SKT"=dword:00000001
"AutoCheckoutEx"=hex:02,00,00,00
```

For further information see the following document on the Sparx web site: “[Deployment of Enterprise Architect.PDF](#)”, an in particular page 21, section “Remote Floating License Installation” / “Example registry settings for the service based keystore”.

FURTHER SPARX SYSTEMS’ EA USER INTERFACE CONFIGURATION

The Labnaf installer automatically optimizes EA’s user interface for Labnaf.

You can further refine this configuration. See [Optimizing User Interface for Labnaf](#).

RUN THE INSTALLER

Run **LabnafForSparx.msi**.

SET THE LABNAF REGISTRY KEYS POINTING TO THE MDG FILE AND THE PRODUCTION REPOSITORY

Prerequisites:

1. A repository has been deployed.
2. A Sparx shortcut to the repository is available and is called "**Labnaf_Prod_Repository.eap**".

[HKEY_CURRENT_USER\Software\Labnaf]

"LoadMdgFrom"="MdgFiles"

"ActiveFolder"="H:\\Labnaf\\3_Prod" *(as an example)*

"ProdFolder"="H:\\Labnaf\\3_Prod" *(must be the same as ActiveFolder for the end user at least)*

ADD A LABNAF ADDIN LICENSE CERTIFICATE

Copy a license certificate file to the folder `%APPDATA%\Roaming\Labnaf\Licenses`

A license certificate file name has a “.Inlic” extension. It looks like this:

```
00002_Labnaf AddIn_Professional_(5u)_(0e)_(2019-06-27)_{d2d27aea-201f-4b88-88ab-562450fbdf2}_(1)d.Inlic
```

ADD A SHORTCUT TO THE PRODUCTION DATABASE ON THE DESKTOP

Add, on user’s desktop, a shortcut to the “**Labnaf_Prod_Repository.eap**” file.

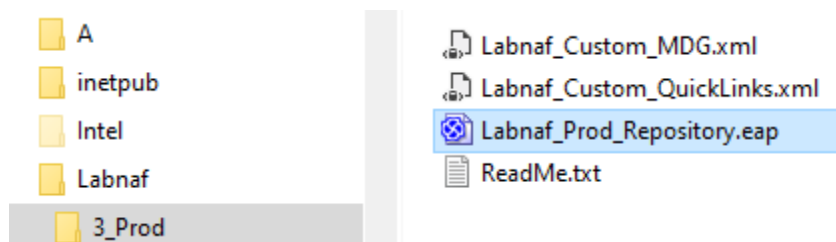
The “**Labnaf_Prod_Repository.eap**” file you should be in the [production configuration folder](#).

That folder should be pointed by the following registry key called “**ActiveFolder**”.

Example:

```
[HKEY_CURRENT_USER\Software\Labnaf]
```

```
ActiveFolder="H:\\Labnaf\\3_Prod"
```



For detailed deployment information, see the diagram [Labnaf - Deployment on User’s Computer](#) (Related item: [Labnaf - Deployment on Servers](#)).