

Labnaf

Unified Framework for Driving Transformations

Overview

Labnaf makes Digital Transformation visible and in motion



Strategist

Business Architect

Other Architecture Roles

Business Context
Business Models, Goals...

Value Streams...

Drive Changes to the Operating Model

Visible Enterprise Description

Strategy Definition

Strategy Execution

Project Architecture

Detailed Requirements, Design & Implementation

Operational Info Gaps...

Target Capabilities Roadmaps...

Enterprise Architect

Technical Info & Gaps

Approved Solutions

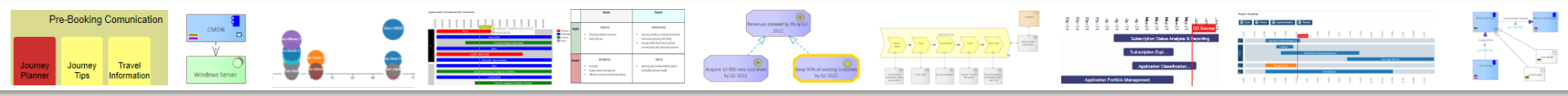
Implemented Solutions

Solution Architecture...

Solution Architect

Solution Design...

Designer
(Software, Robotics...)



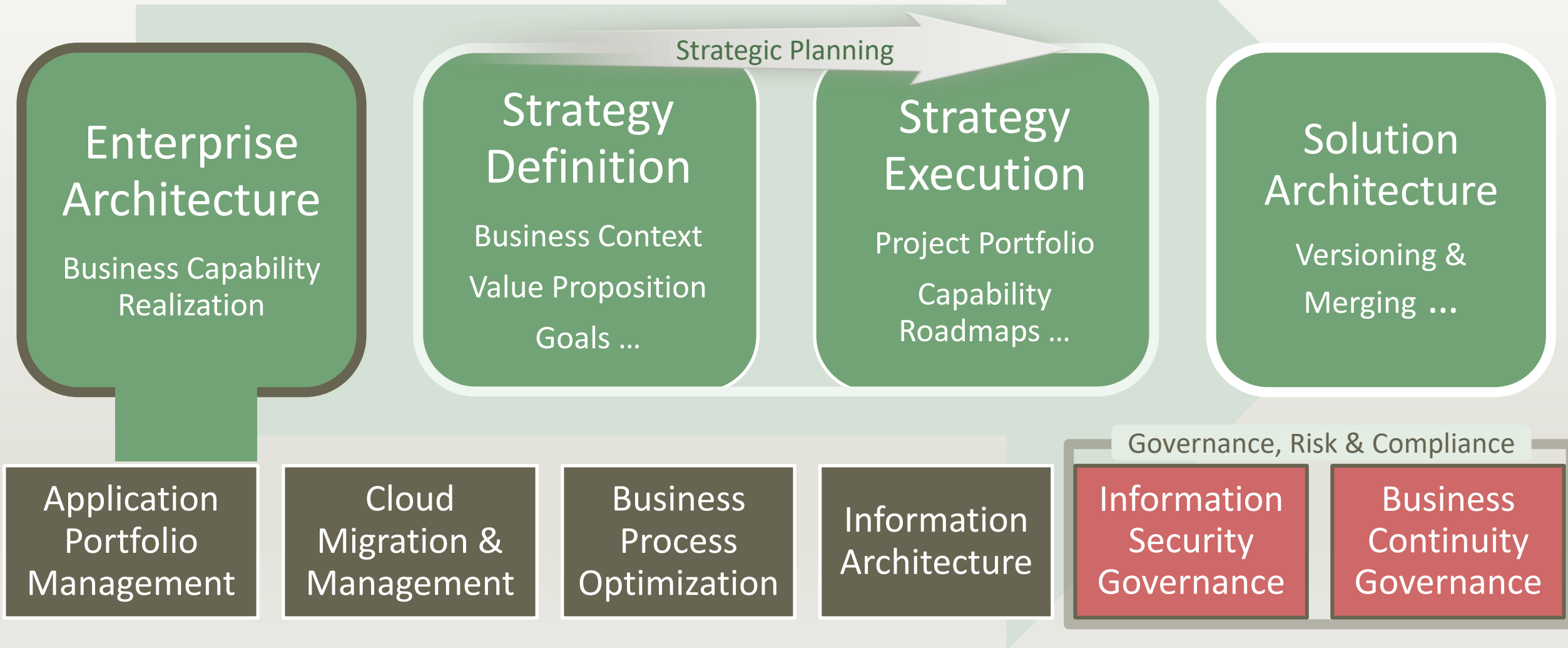
Agenda

1. What is Labnaf?
2. Why using Labnaf?
3. Key features
4. Demo

Appendix: As-is versus potential situation

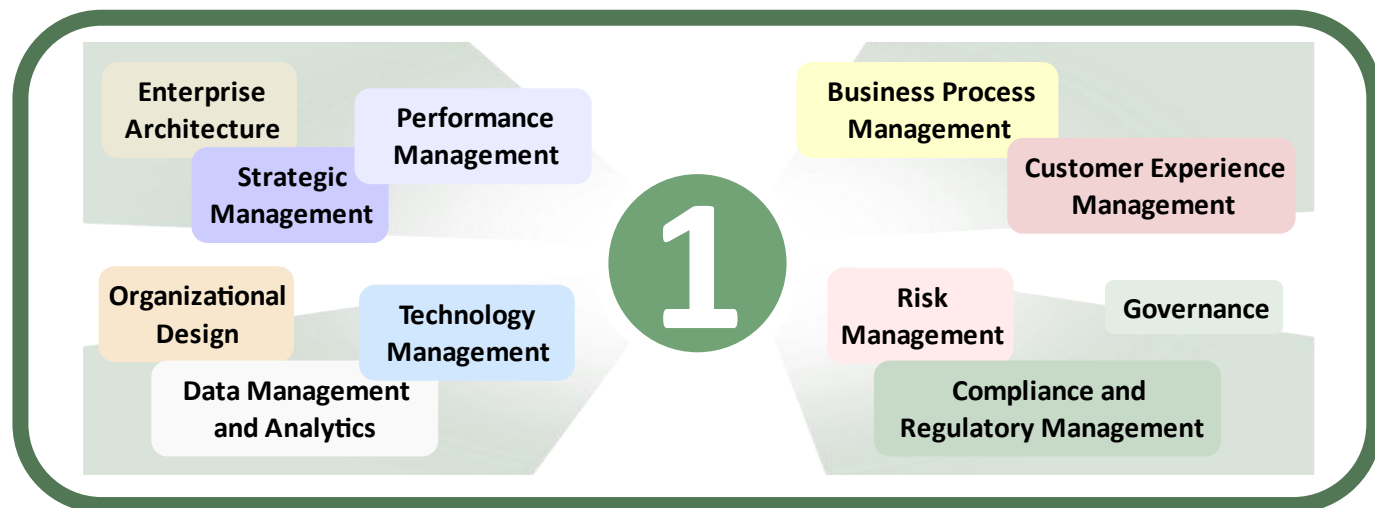


Labnaf

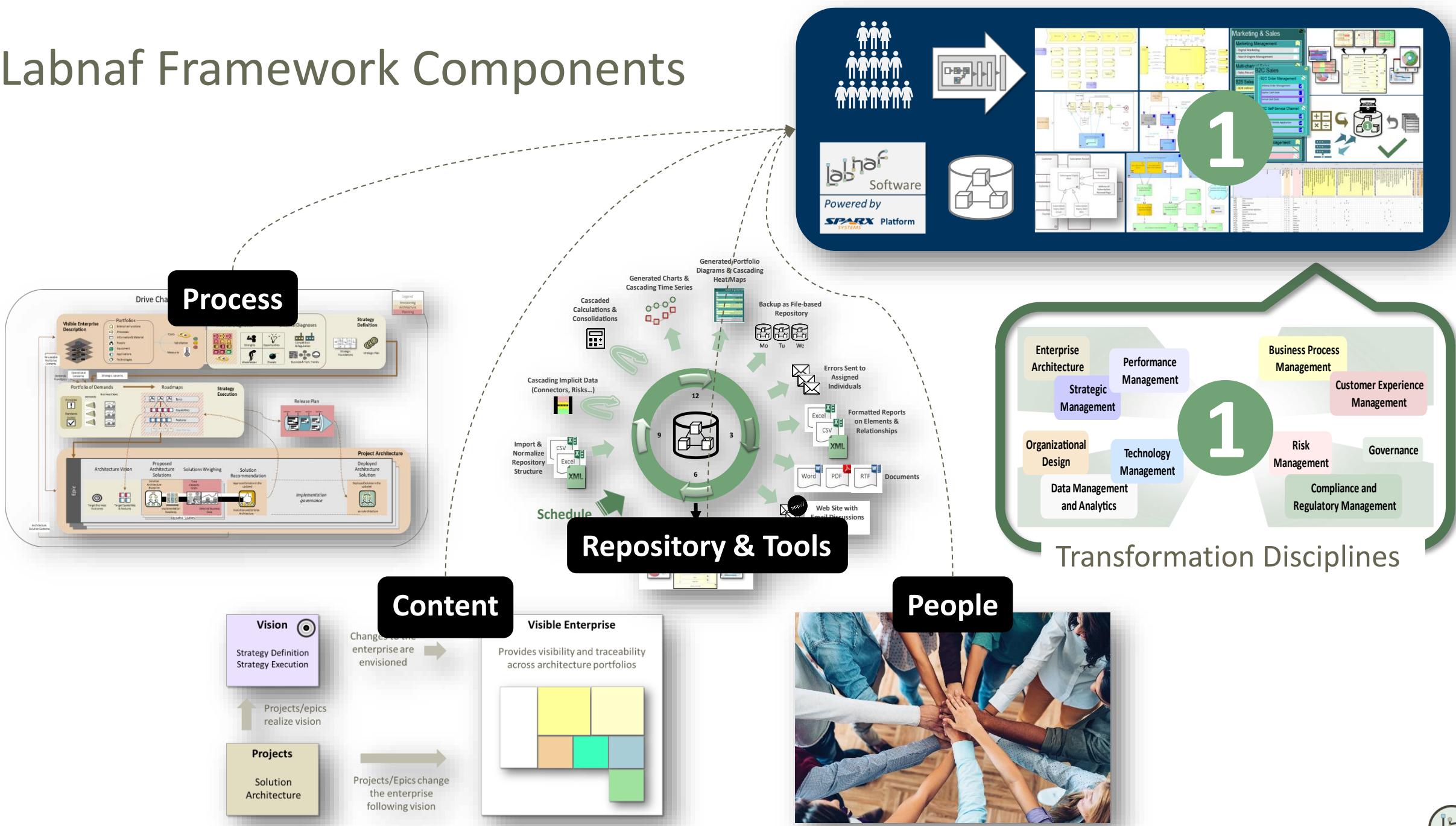


Unified Framework for

Actionable out of the box

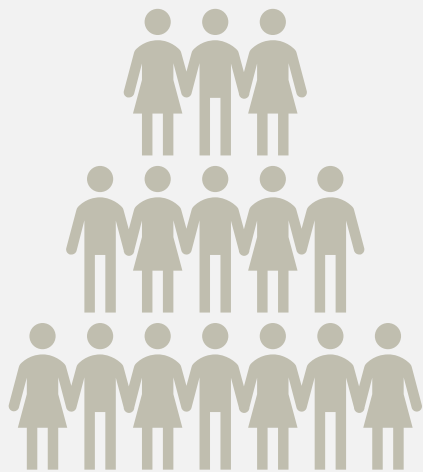


Labnaf Framework Components



Unlike other software...

Labnaf is, altogether, a way of working, a method, a process with **high productivity tools and dashboards**



We play many different roles, but...



We speak the same language



We share the same information in the same repository



We follow the same process



And we use the same software

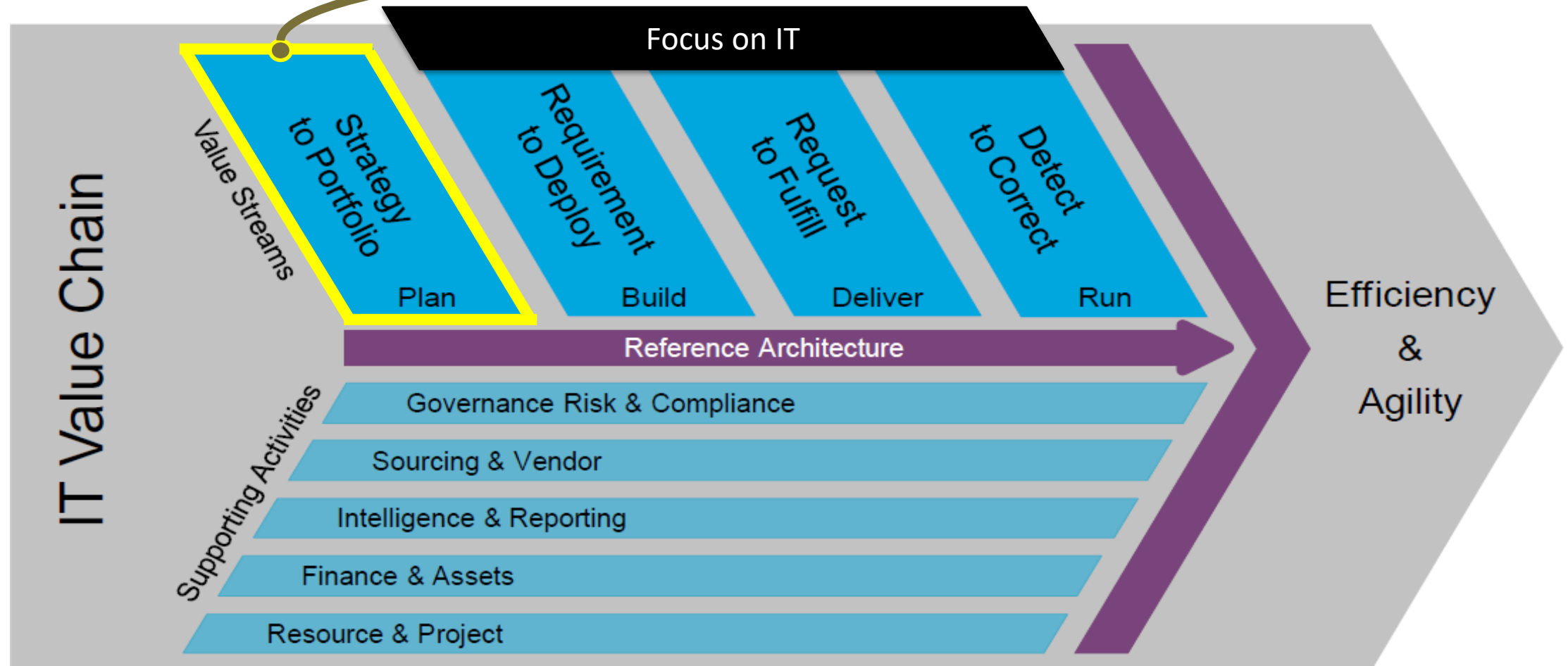
We collaborate effectively

Seamless Cross-discipline Collaboration

Application Architect	Functional Analyst
Business Architect	Infrastructure/Technical Architect
Business Area Lead	IOT Architect
Business Process Engineer	Program Manager
CIO	Project Manager
CISO	Risk Manager
Cloud Architect	Robotics Architect
Data Architect	Security Architect
Enterprise Architect	Strategist



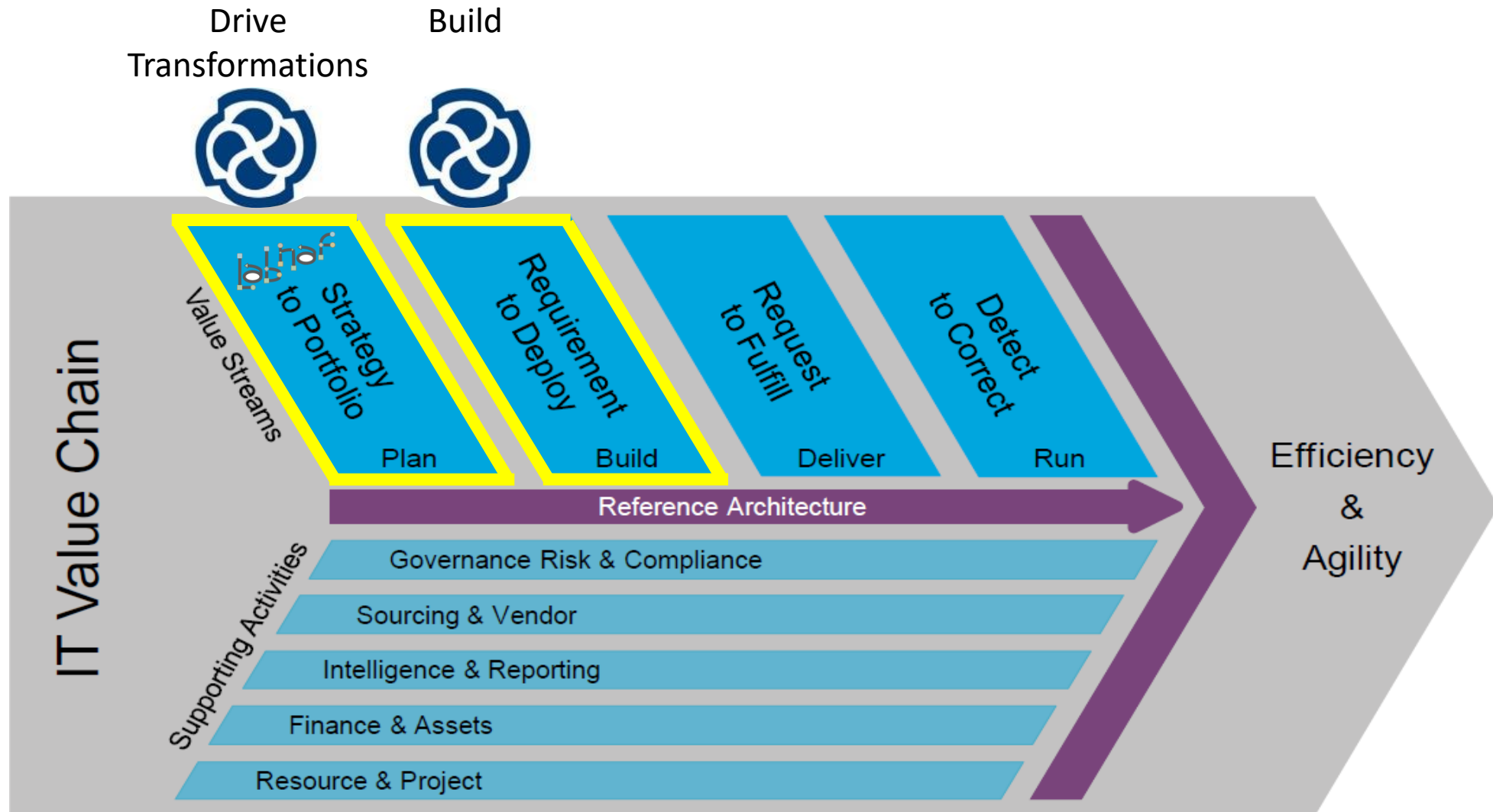
Labnaf focuses on **driving** Transformations



IT4IT Value Chain



Scope of Sparx EA with Labnaf



IT4IT Value Chain



Agenda

1. What is Labnaf?
2. Why using Labnaf?
3. Key features
4. Demo

Appendix: As-is versus potential situation

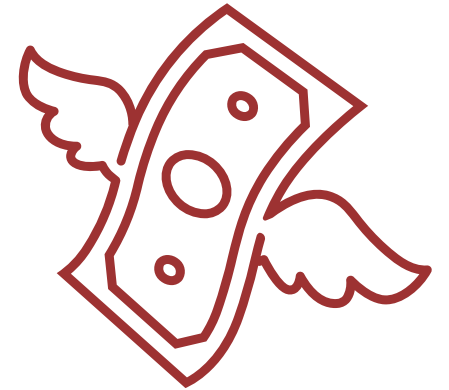


Building an Architecture Practice is a Long Journey

- Requirements, Planning, Management Support, Budget...
- Hire experts
- Select reusable standards
- Integrate the standards into a single process
 - Define the architecture content
 - Select the languages
 - Integrate the languages
 - Define the roles
 - Select the tools
 - Integrate tools supporting languages and standards
 - Define a repository structure content
 - Create a POC
 - Document the approach
 - Put governance in place...



Project
Cancelled



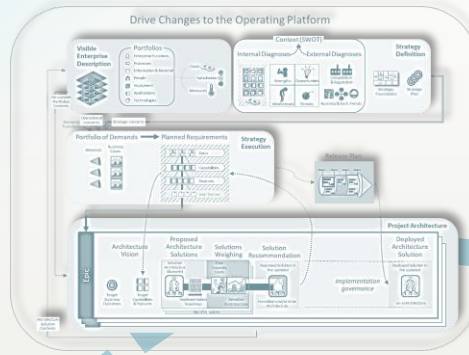


*Accelerated Decision Making
Improved Agility*

Unified Transformation Disciplines



One Process



Business Stakeholder

CxO

Strategy

Demand Management

Capability Planning

Program Management

Project Management

Security & Risk Management

More...

One team

GDPR

AI

Ecosystems

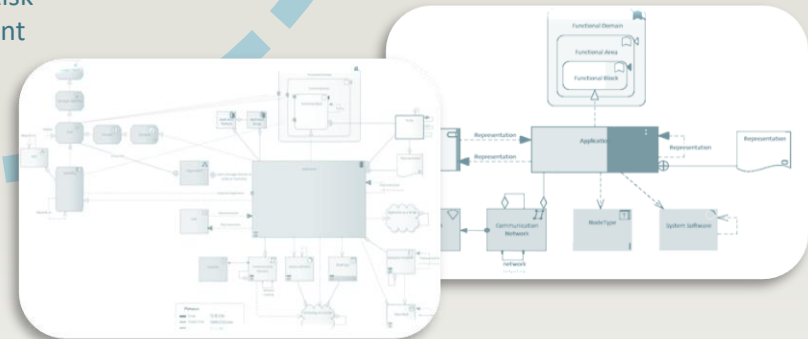
Industry 4.0

Cloud Computing

One Repository & One Software



One Language



Drive Transformations and Manage Risks

- Navigable Business Capability Heat Maps using cascaded consolidations
- Application, Equipment and Technology Portfolio Management
- Application Lifecycle Management
- Business Continuity Governance and Trends
- Information Architecture, Classification & Usage
- 360° View on Sensitive Information Usage and Risks
- Strategy Definition & Executions (Roadmaps)
- Architecture Management
- ...

Sample Dashboards: <https://www.labnaf.one/In-content/dashboards>



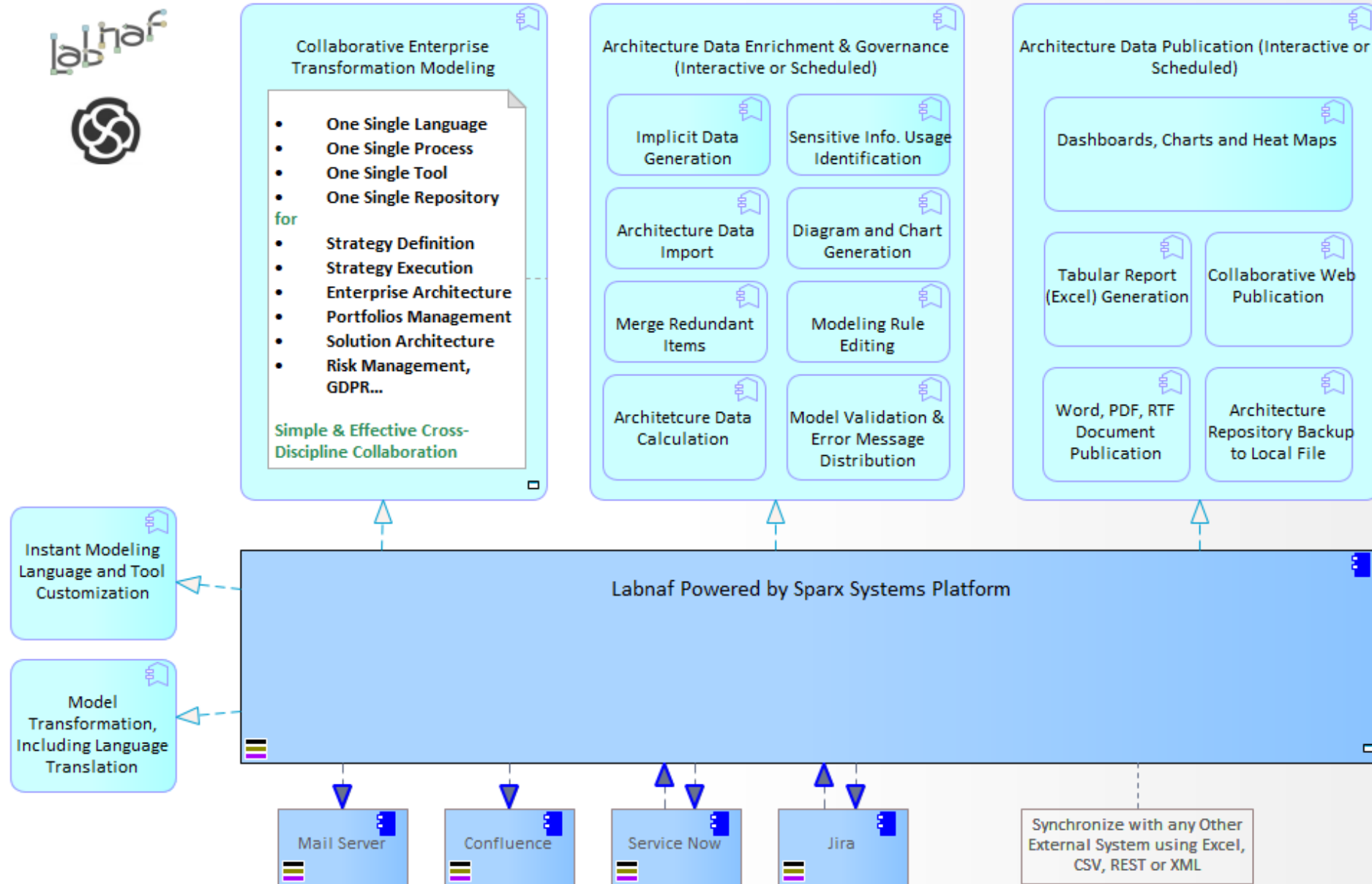
Agenda

1. What is Labnaf?
2. Why using Labnaf?
3. Key features
4. Demo

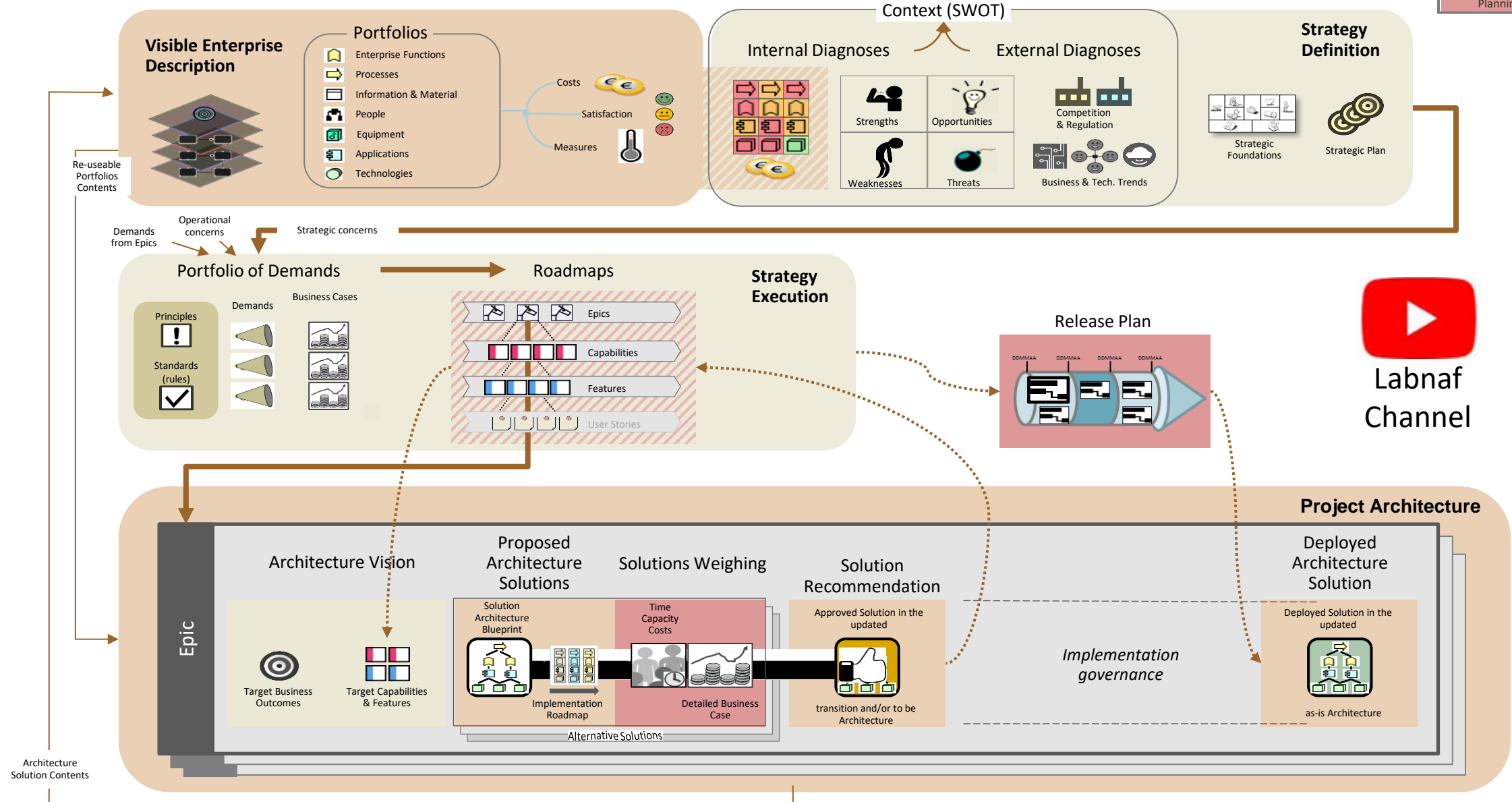
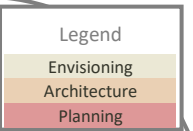
Appendix: As-is versus potential situation

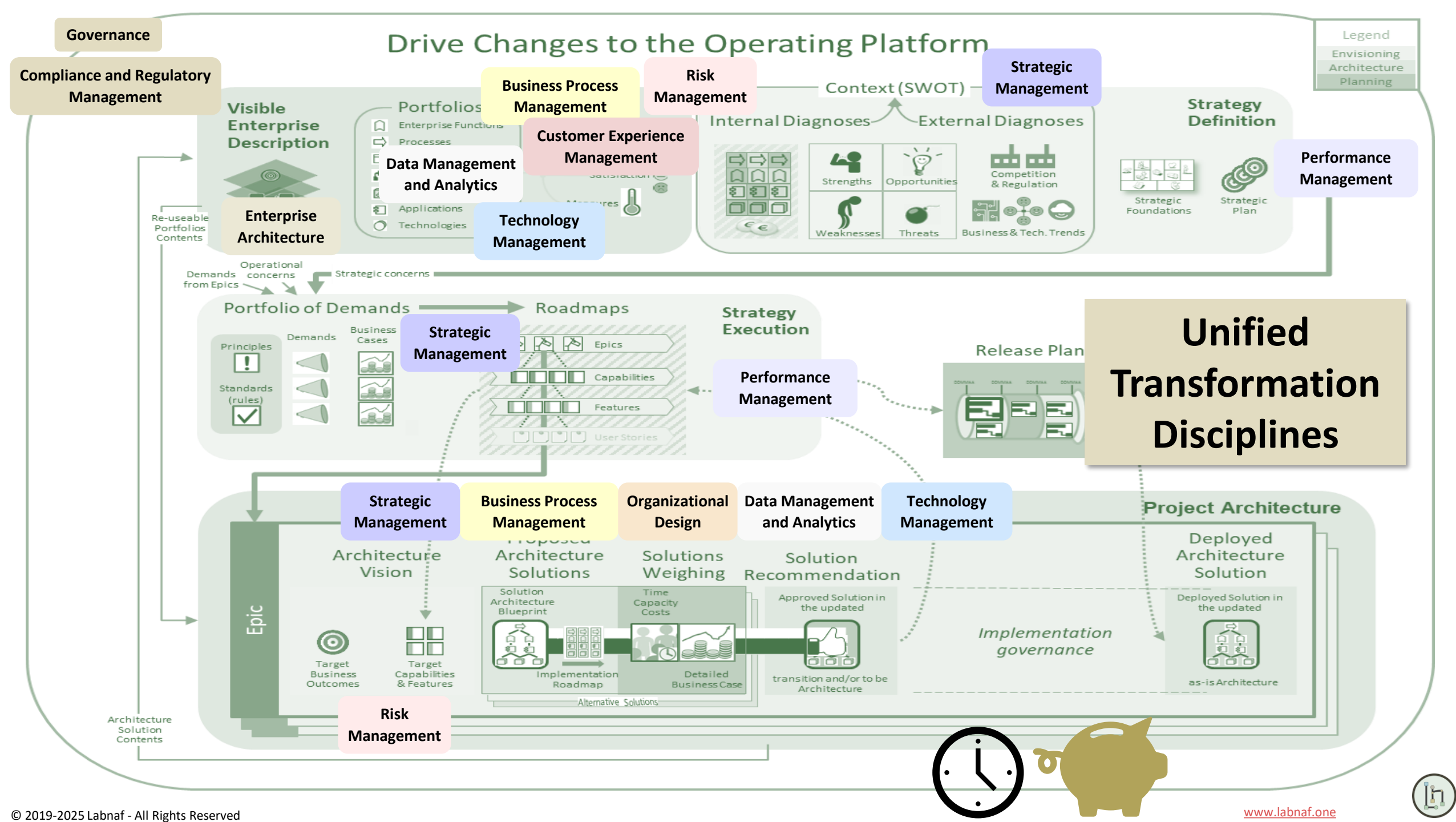


Collaborative Enterprise Visualization and Transformation From Strategy Down to the Code



Drive Changes to the Operating Platform







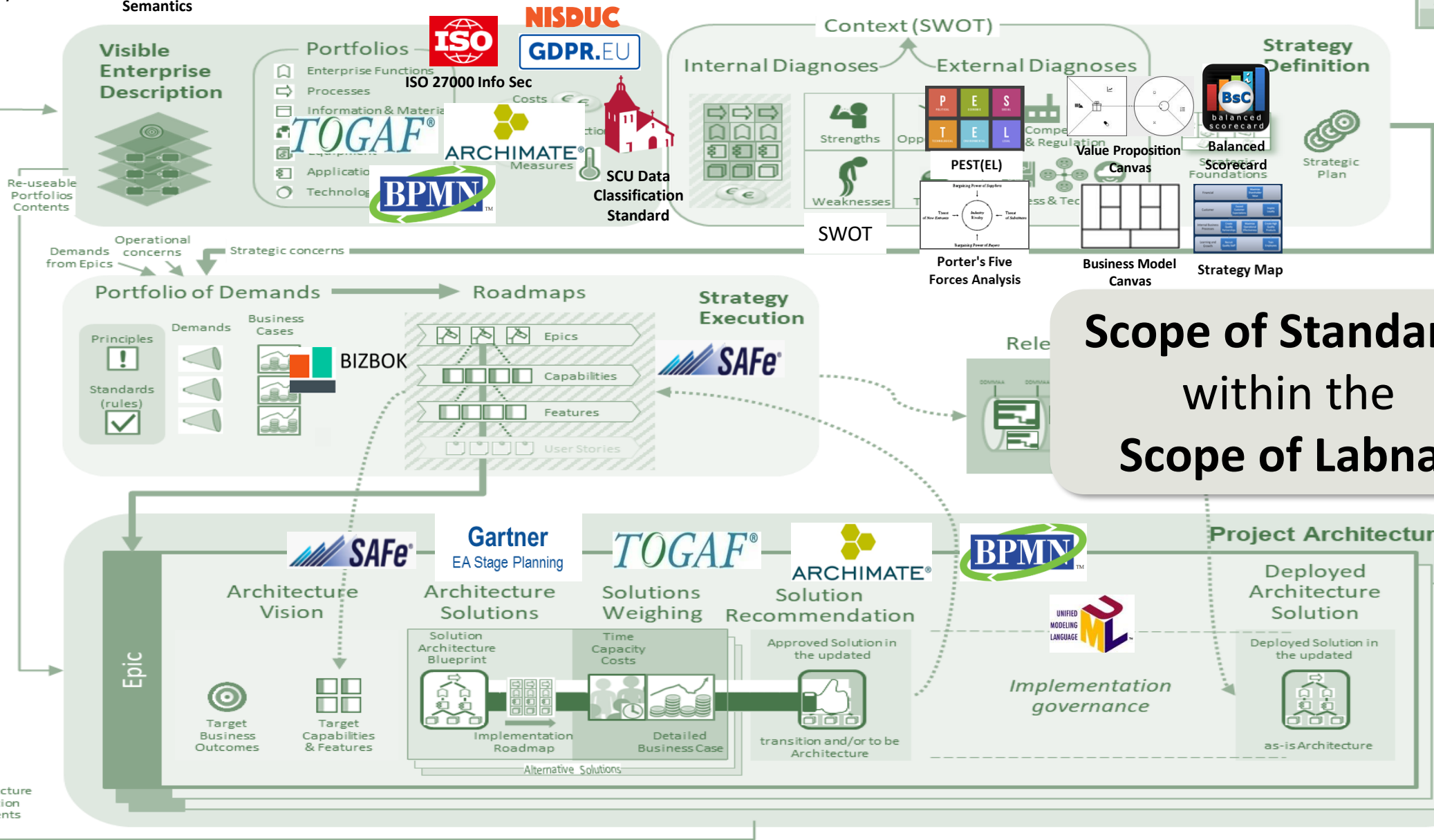
ISO/IEC/IEEE 42010



Systems Semantics

Drive Changes to the Operating Platform

Legend
Envisioning
Architecture
Planning

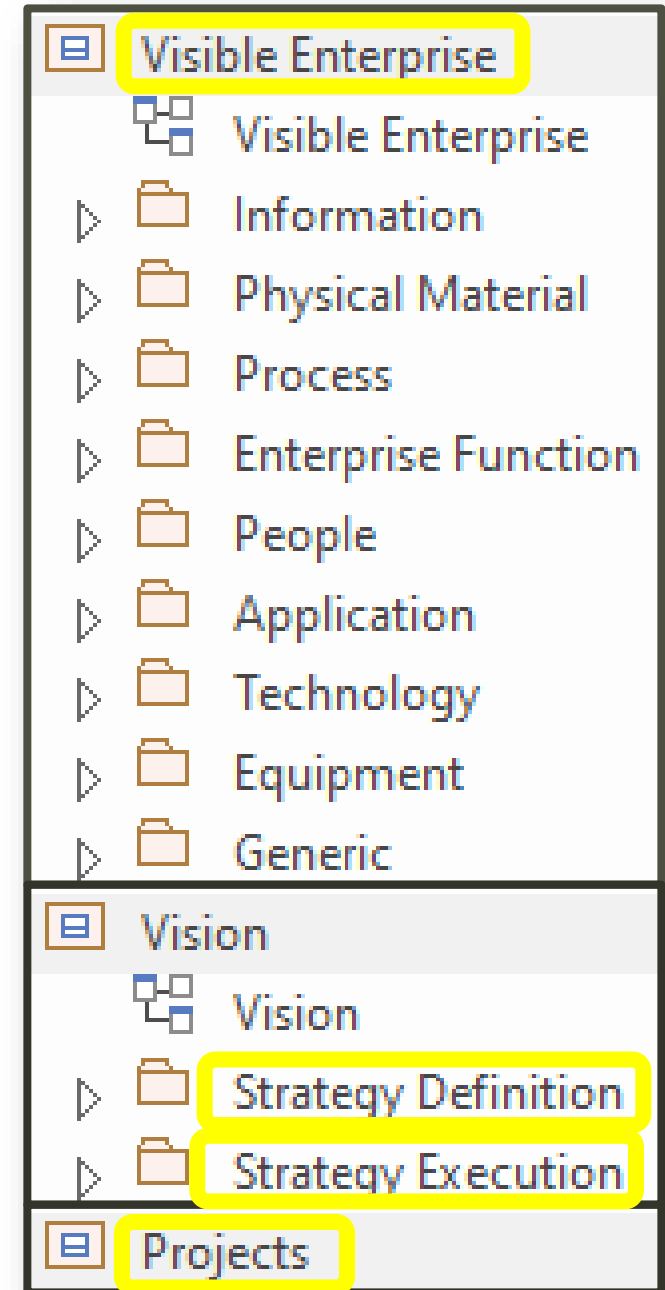
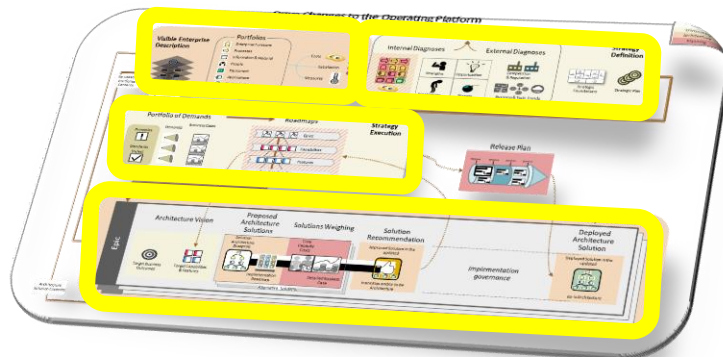
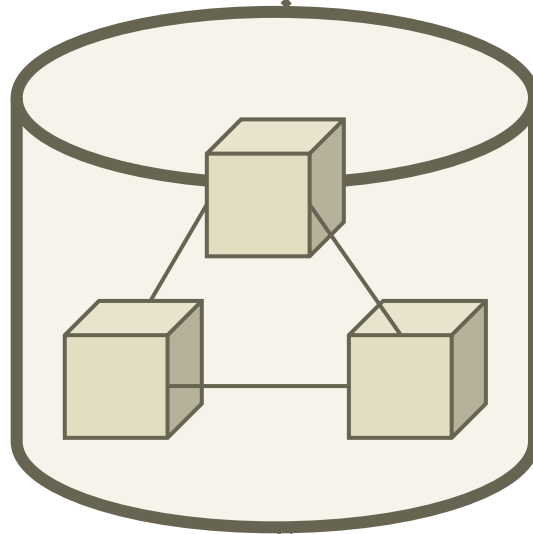


Scope of Standards within the Scope of Labnaf

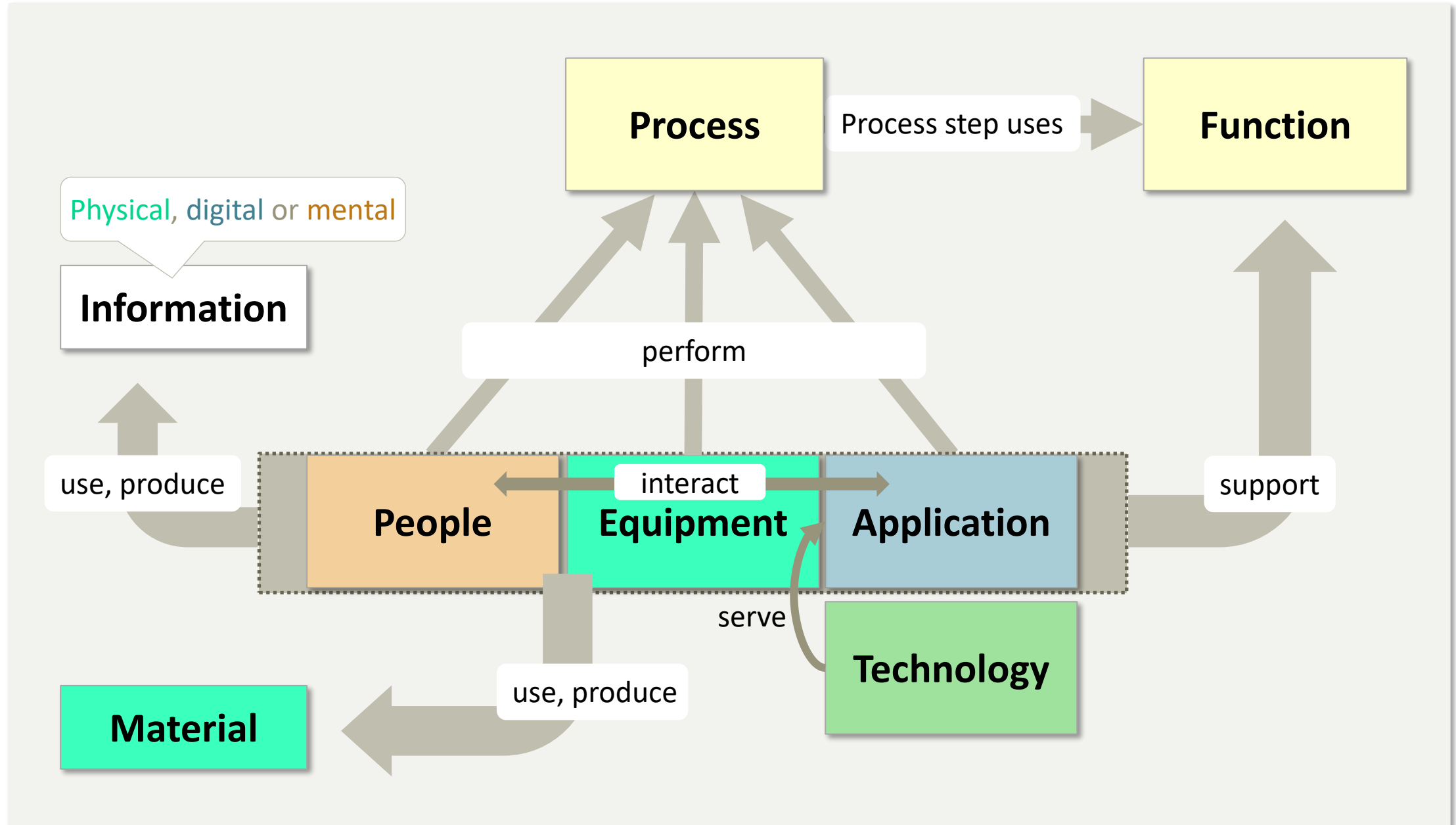


In the shared repository

Terminology is consistent with the process



Architecture Content Organization - Overview



Labnaf Element and Connector Types

Modeling Elements & Connectors

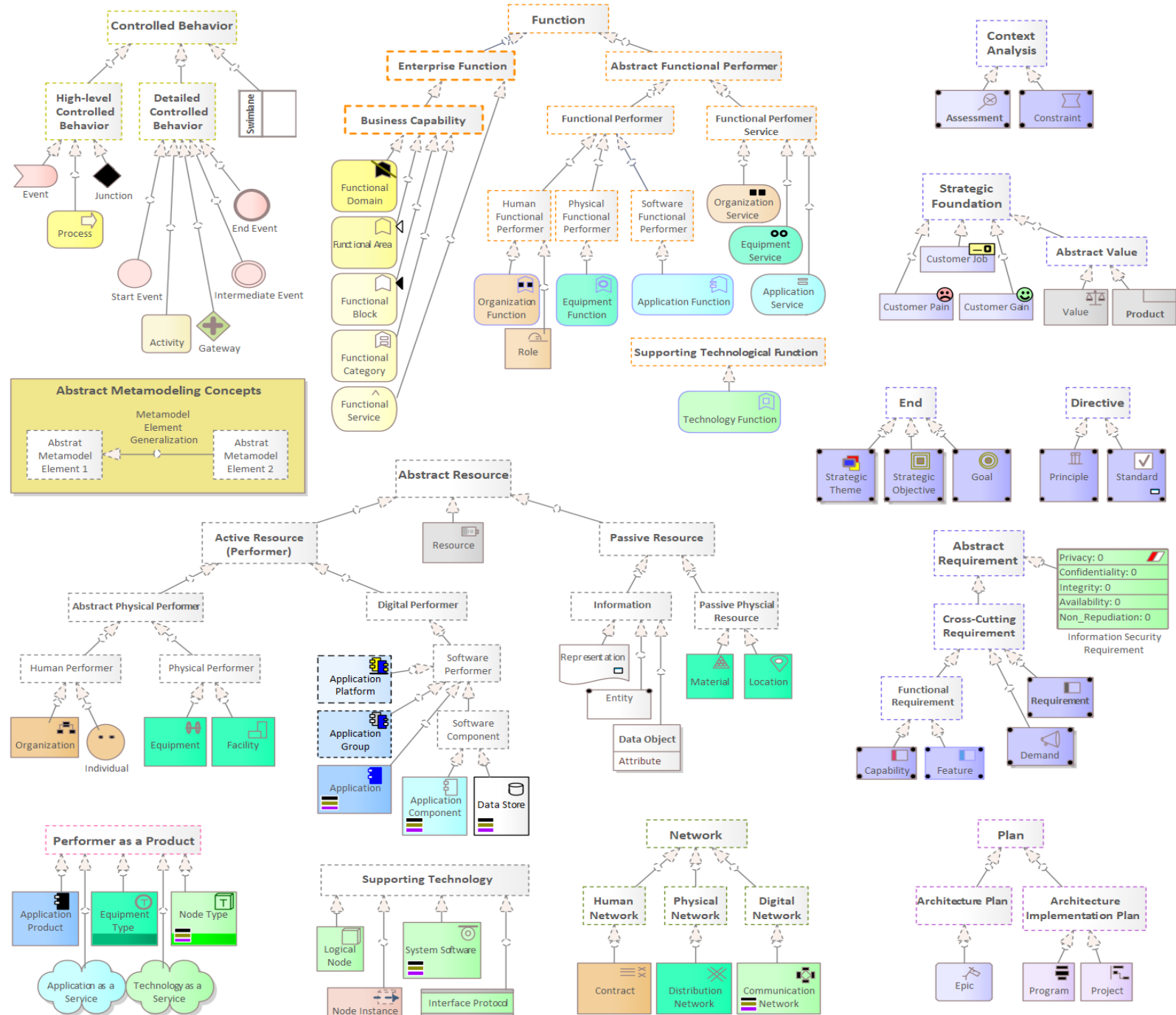


Navigate
on-line...

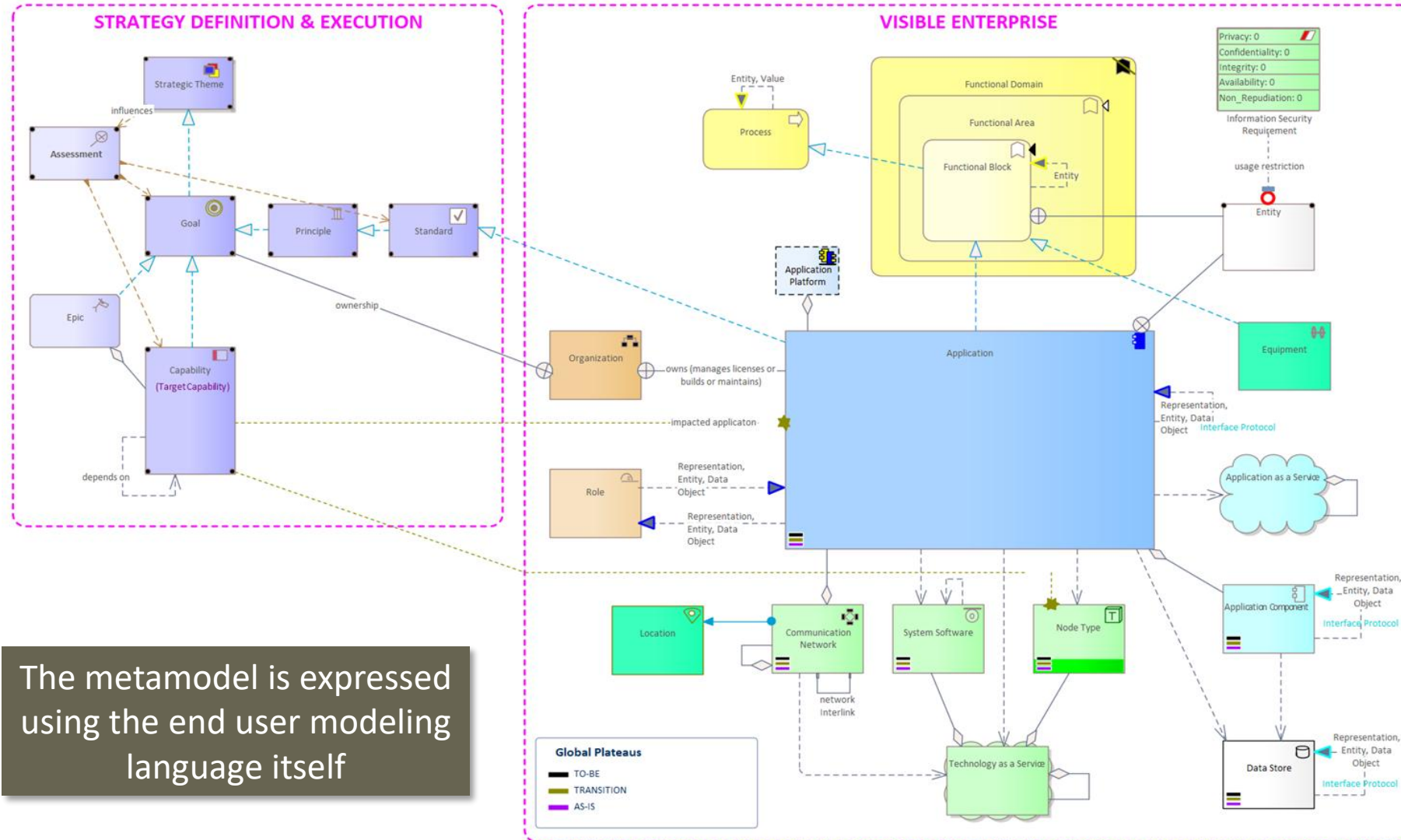


Taxonomy of Element Types

Part of the standard metamodel



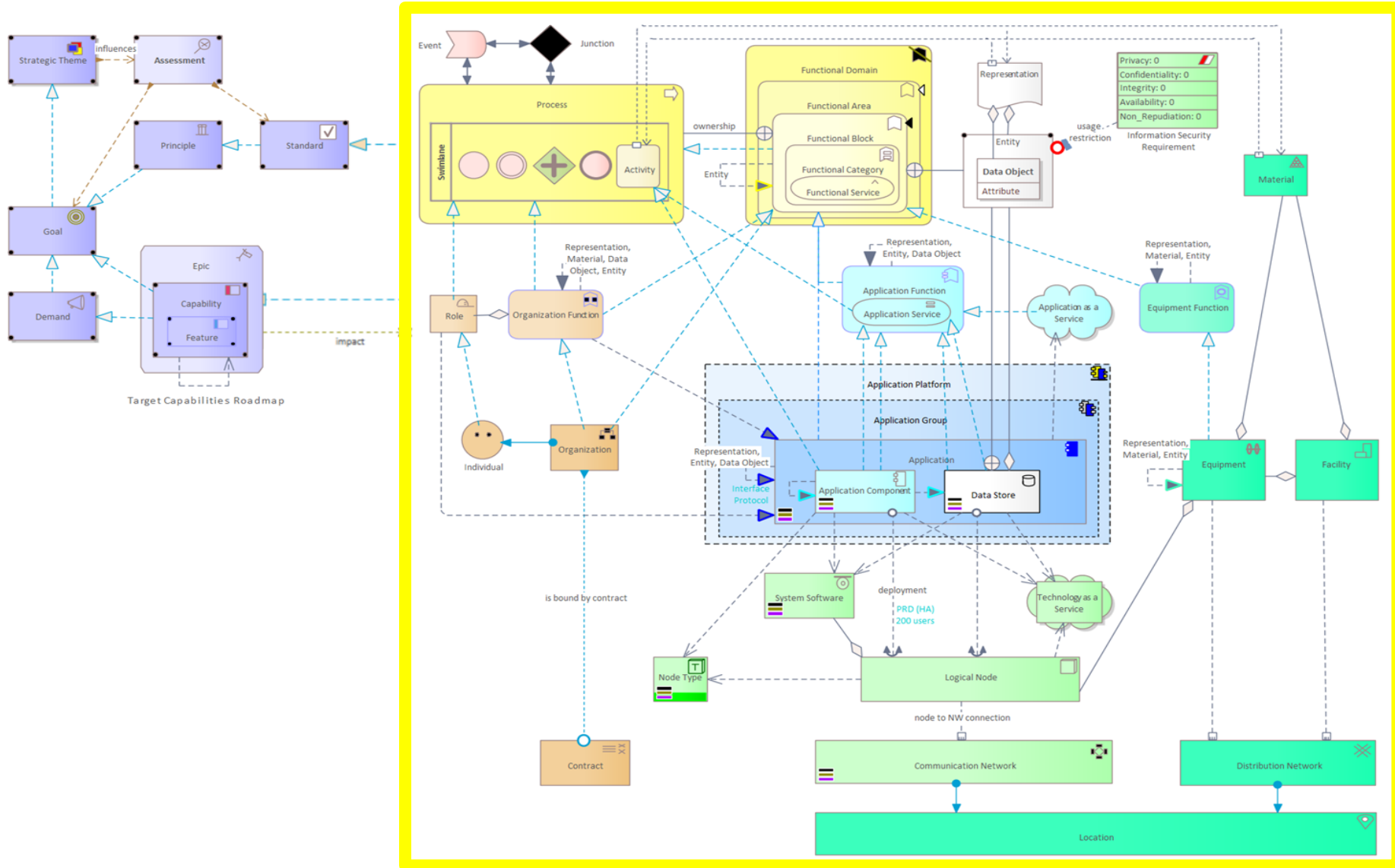
A Subset of the Metamodel including Strategy & Enterprise Architecture



The metamodel is expressed using the end user modeling language itself

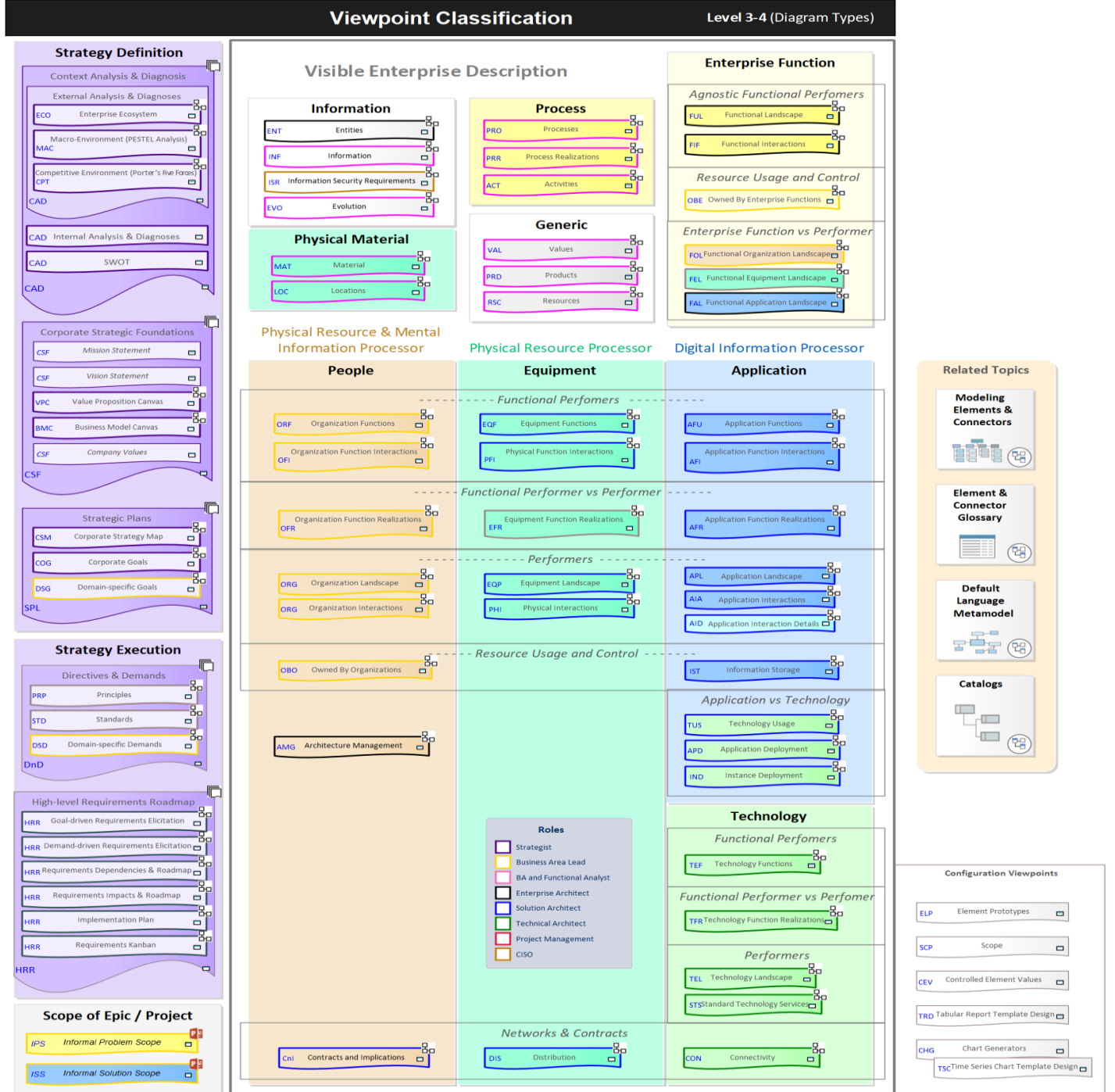


A Subset of the Metamodel including Strategy & **Solution** Architecture

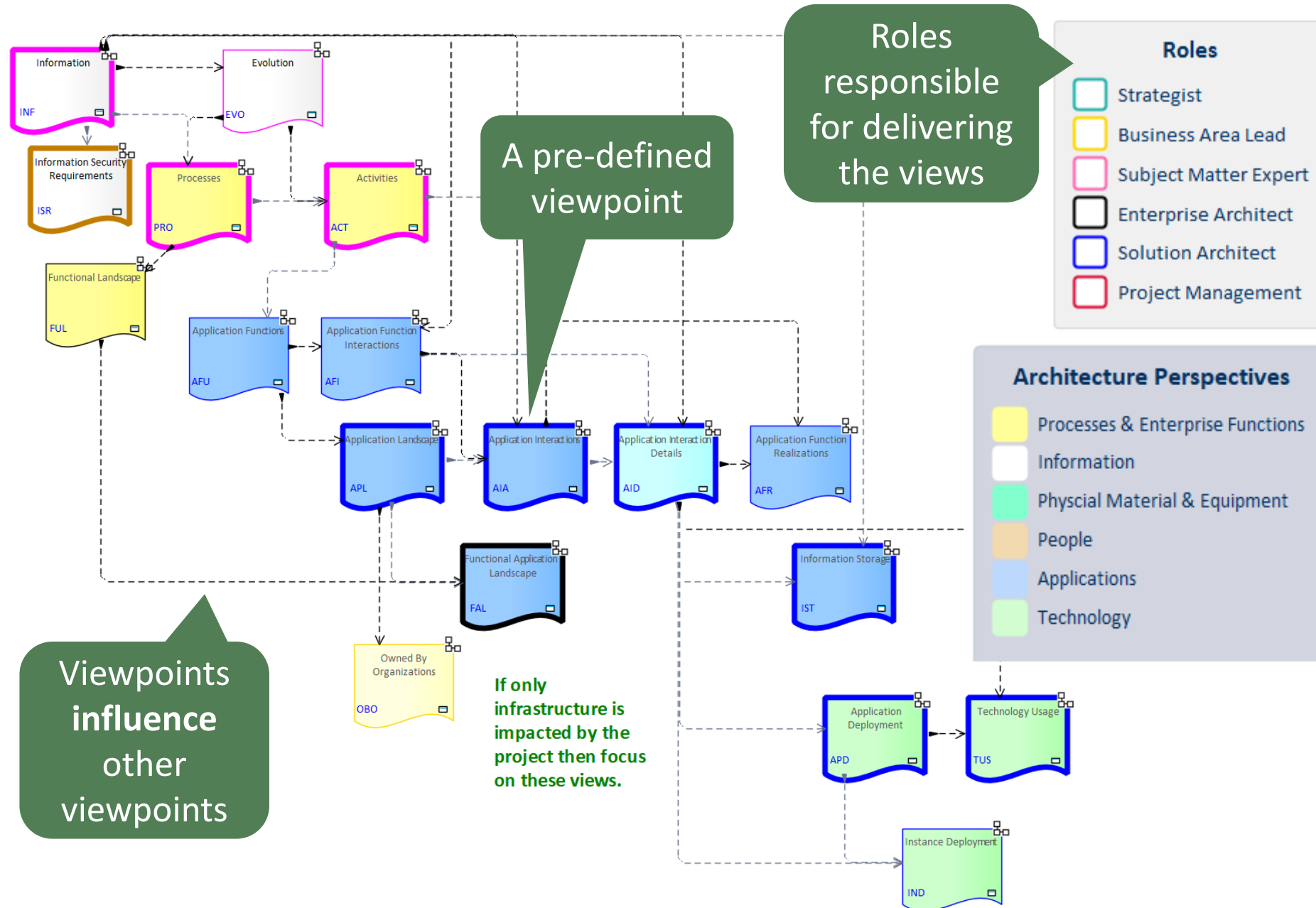


These are the predefined Labnaf viewpoints

A Viewpoint
is a type of view



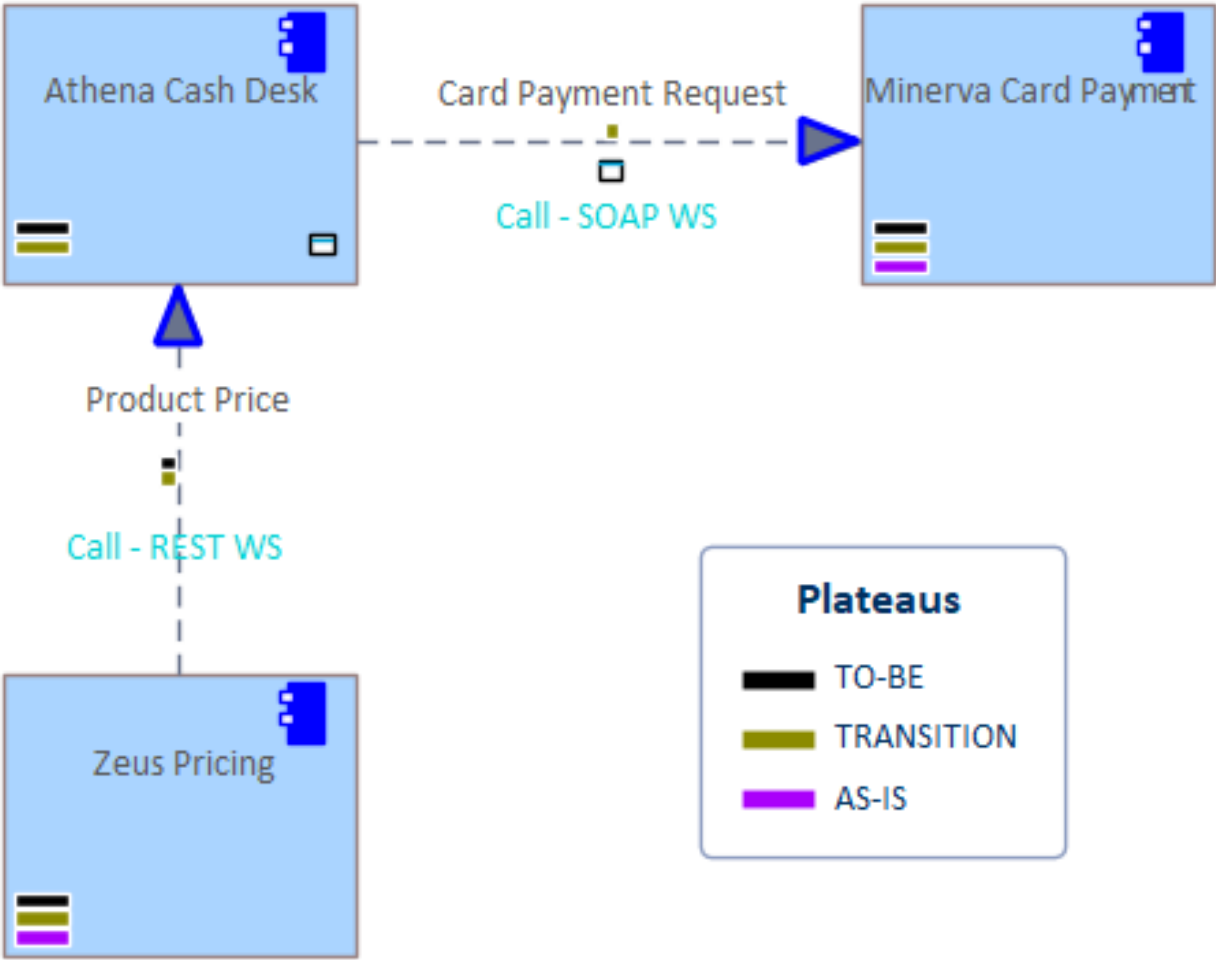
Scenario: IT Architecture Solution Description



Application Interactions

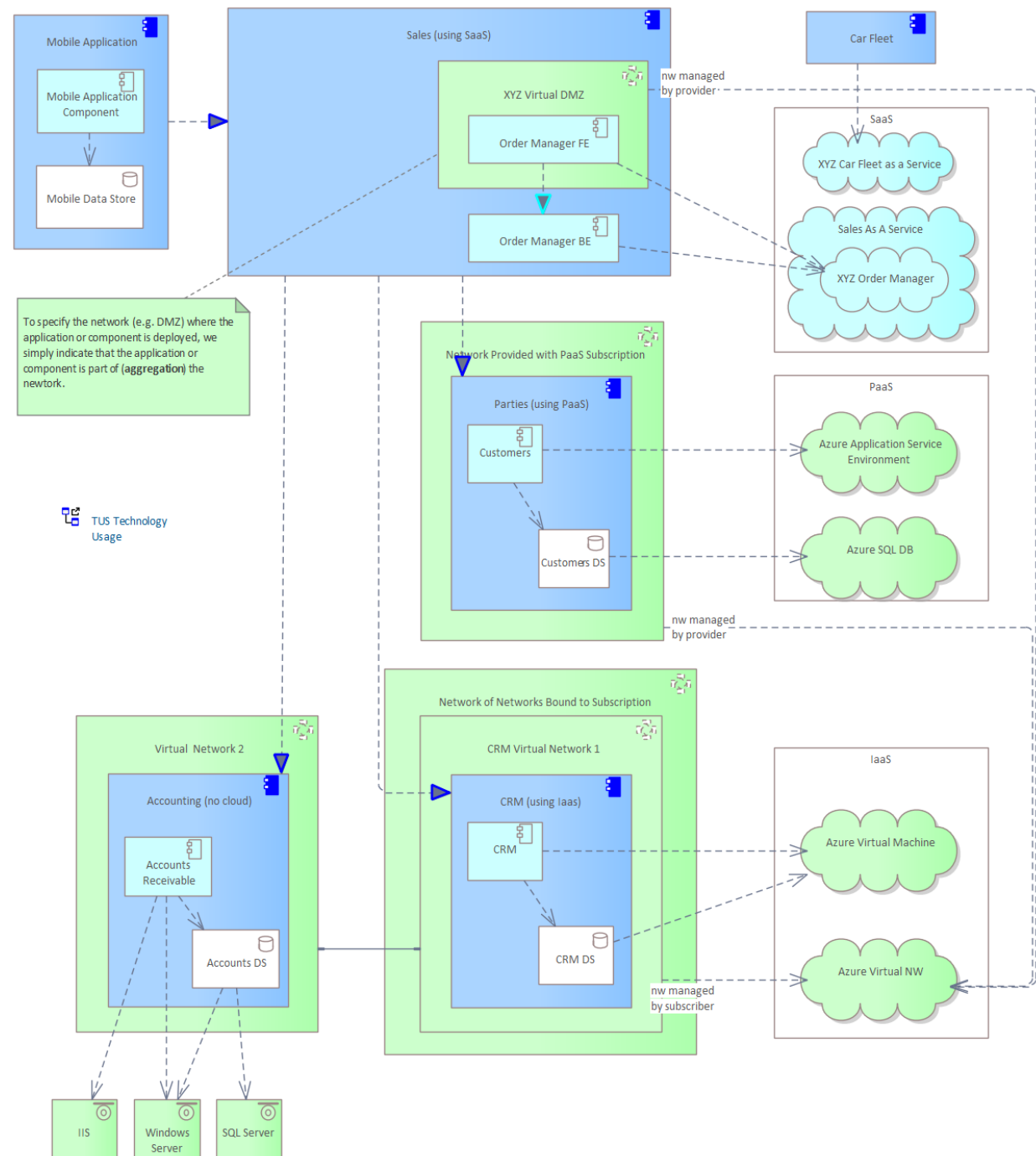
viewpoint

Diagrams are used by and for architects for entering and describing architecture data



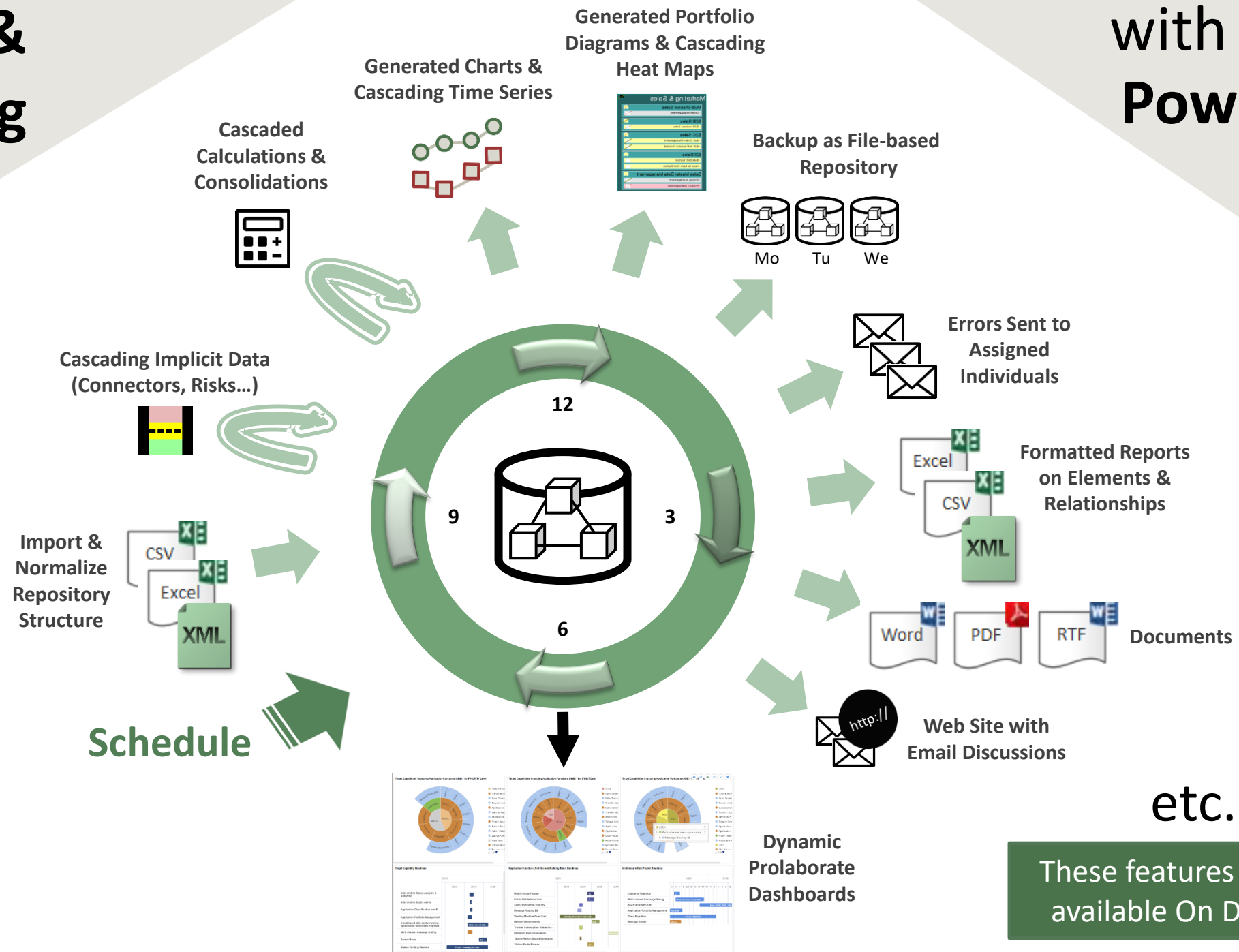
Technology Usage viewpoint

Any cloud mixed on
premise pattern



Scripting & Scheduling

with Labnaf
PowerShell



etc.

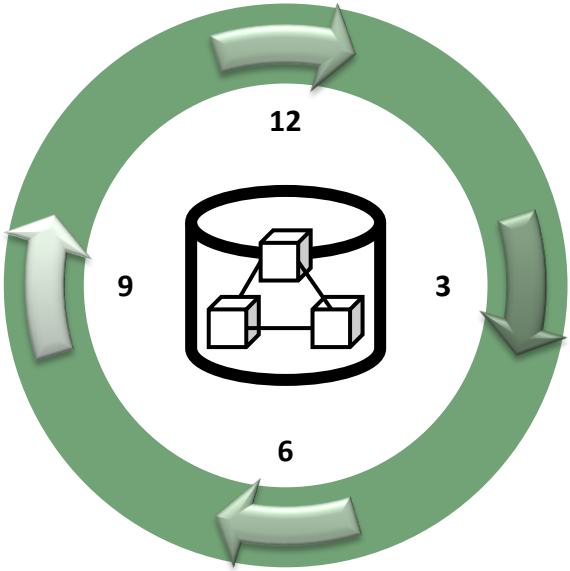
These features are also
available On Demand



- Configure & Test in the UI
- Script
- Schedule



| Commands |
|--------------------------------|
| AutoConnectorsDelete |
| AutoConnectorsGenerate |
| BackupToFile |
| CalculateTaggedValues |
| ClonePackage |
| CreatePackage |
| ExportToXmi |
| GenerateCharts |
| GenerateDiagrams |
| GenerateDoc |
| GenerateHTML |
| GenerateImplicitData |
| GenerateTabularReports |
| ImportConnections |
| ImportFromXmi |
| ImportTabularReport |
| MoveElementsToCalculatedParent |
| MoveElementsToPackage |
| MovePackagesToPackage |
| RenameItem |
| ScheduleCommand |
| SetDiagramProperty |
| SetProperty |
| SqlExportToCsv |
| Validate |

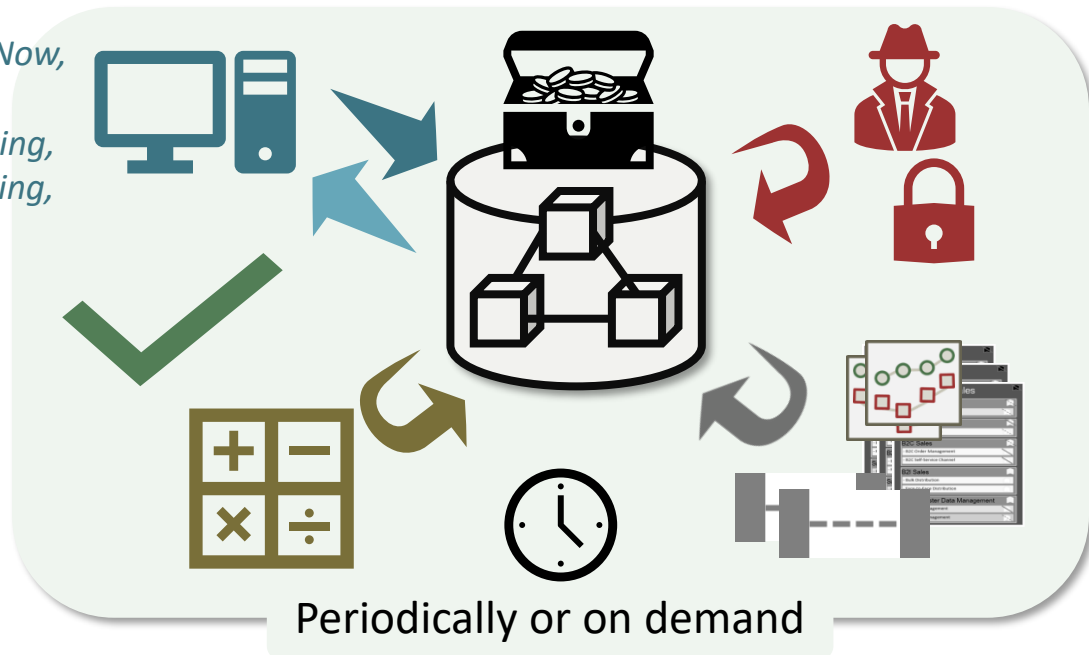


Data Enrichment & Distribution

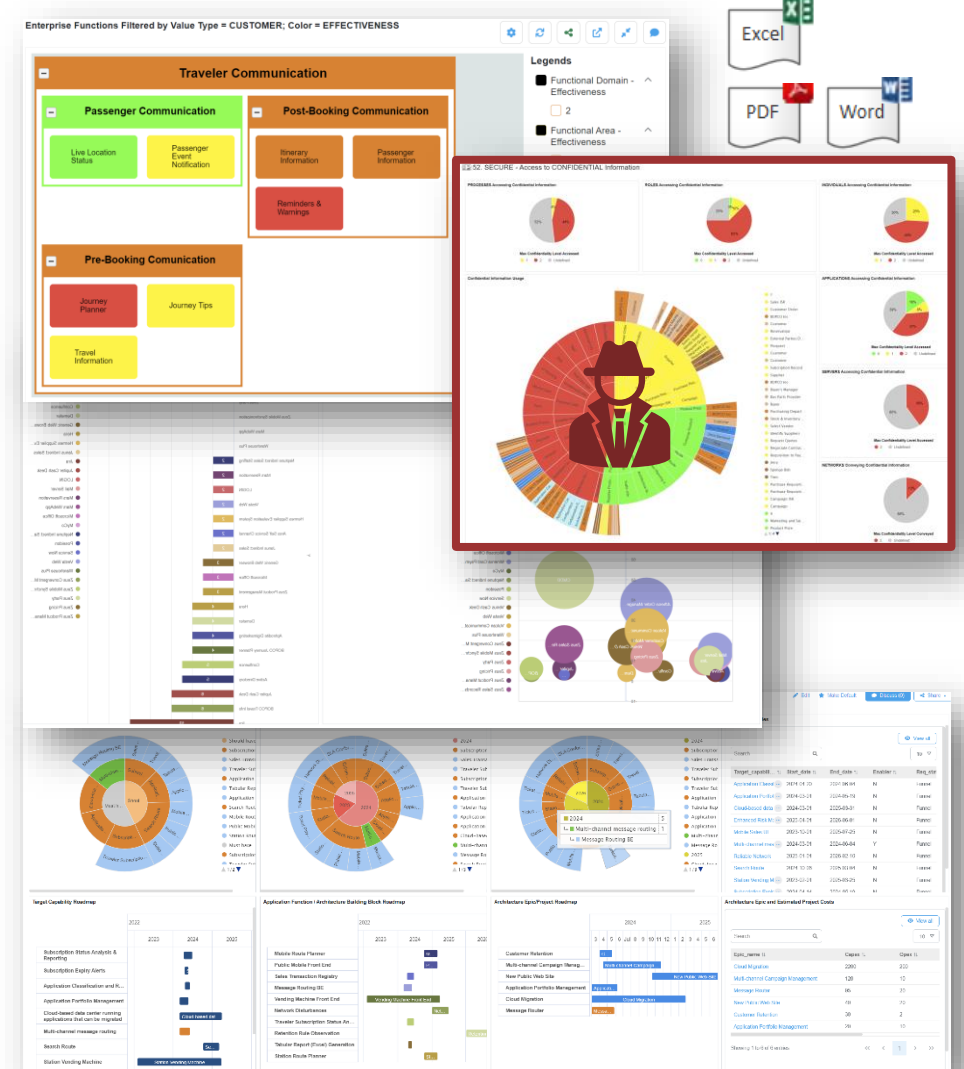
Data is Automatically Enriched...

- Import data from different sources
- Validate & normalize the repository content
- Cascade calculation
- Generate implicit data, connectors, diagrams & charts
- Generate 360° analysis of sensitive data usage & risks
- Export to other systems and repositories

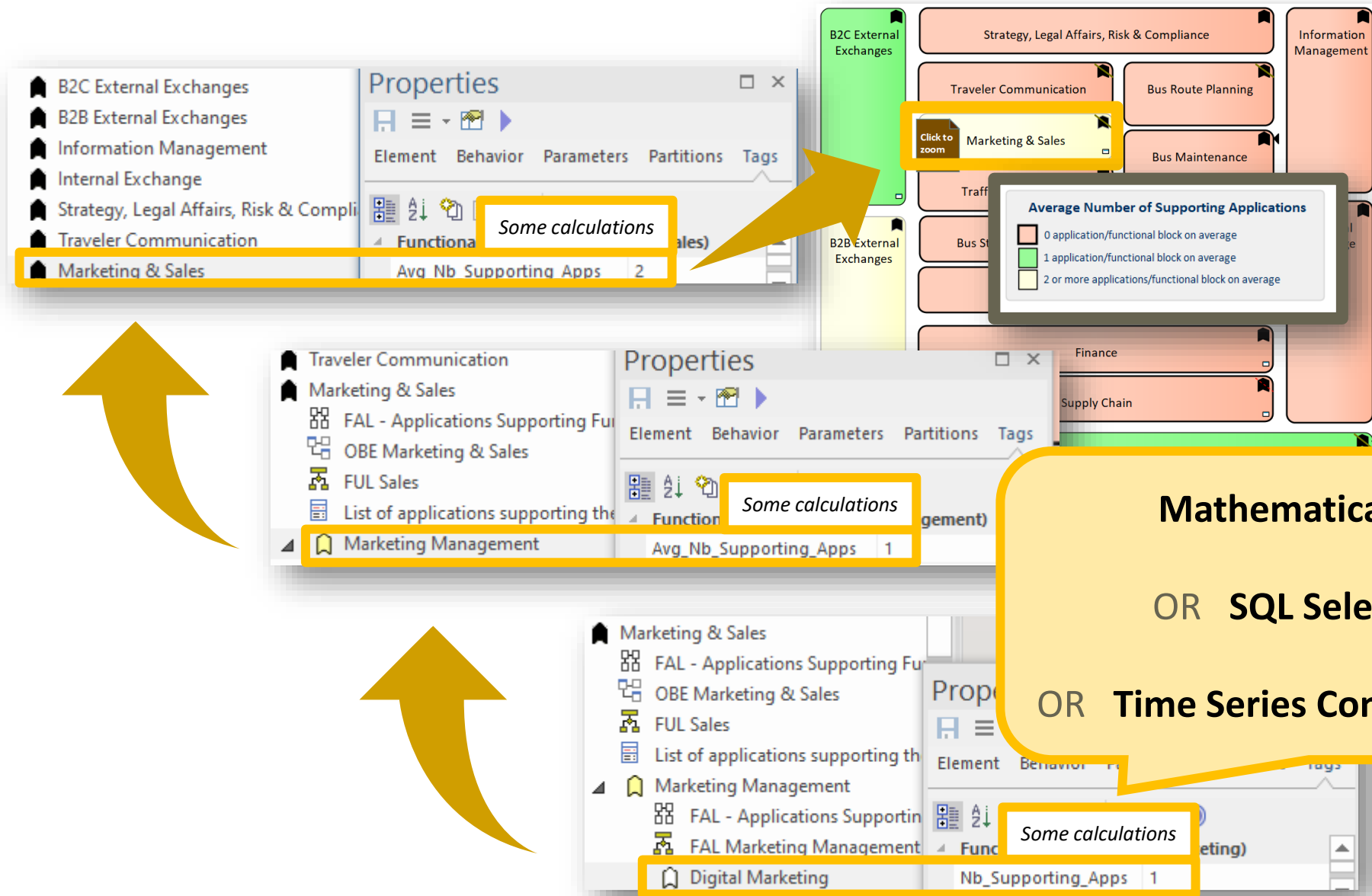
Service Now,
CMDB,
Monitoring,
Accounting,
HR...



and Presented in Dashboards & Reports



Cascaded calculations



Creating/Updating Architecture and Strategy Data – Use Cases

| What | How | With What |
|--|---|--|
| | HUMAN-CONTROLLED | |
| Initial population of catalogs | Import elements, connectors, properties, diagrams.
<i>Normalize foreign languages.</i> | Labnaf UI
<i>Labnaf Language Transformer</i> |
| Create content & prevent errors | Model elements, relationships and diagrams. | Labnaf UI |
| Edit discrete information details | Edit element properties. | Labnaf UI or
Prolaborate |
| Bulk update using surveys | Export formatted Excel, distribute & import updates. | Labnaf UI |
| Versioning & merging | Create copies (same or different repository) & Merge | Labnaf UI |
| | SCHEDULED (AUTOMATIC) | |
| Synchronization with external systems | Import/Export repository content (CSV,Excel,XML). | Labnaf PowerShell |
| Content enrichment | Calculate, generate implicit connectors & diagrams. | Labnaf PowerShell |
| Validation | Detect errors & inform calculated audience. | Labnaf PowerShell |
| Normalization | Auto correct and reorganize repository content. | Labnaf PowerShell |



Publishing Architecture and Strategy Data

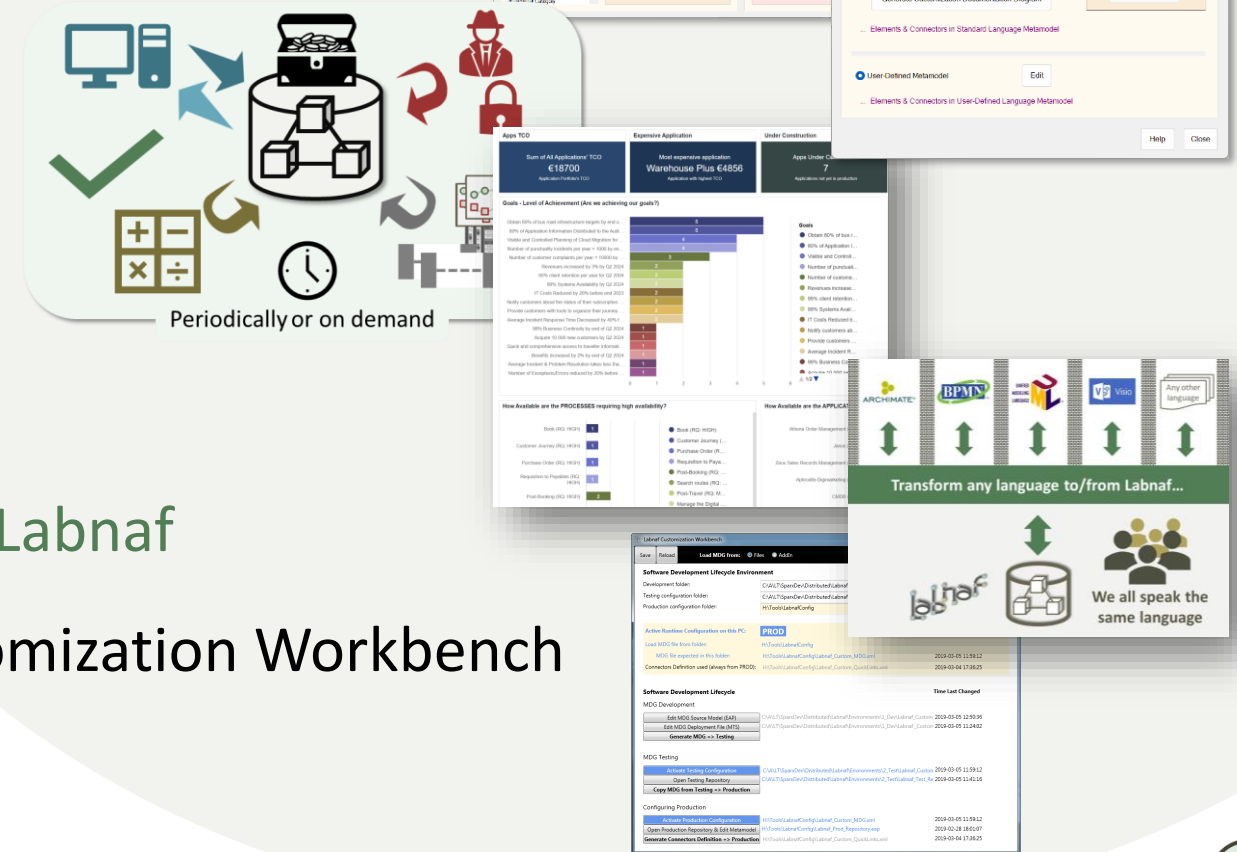
| What | How | With What |
|---|--|--|
| Dynamic Dashboards & Charts | Organize Prolaborate dashboards to visualize, summarize and navigate dynamic catalog contents, calculated values, generated diagrams & charts. | Prolaborate |
| Collaboration/Reviews/Discussions
multiple options | Modelers only: Sparx EA reviews & discussions
Prolaborate users: Prolaborate reviews & discussions
Anyone: Email discussions using the static web site | Prolaborate or
Labnaf UI or
Labnaf PowerShell |
| | HUMAN-CONTROLLED or SCHEDULED (AUTOMATIC) | |
| Static Web Site with Charts
simpler (and cheaper) alternative | Generate static web site to visualize, summarize and navigate catalog contents, calculated values, generated diagrams and charts. | Labnaf UI or
Labnaf PowerShell |
| Rich Excel Formated Reports | Use built-in Labnaf templates or model your own.
Generate. | Labnaf UI or
Labnaf PowerShell |
| Word, PDF, RTF | Use built-in Labnaf templates or model your own.
Generate. | Labnaf UI or
Labnaf PowerShell |

The Labnaf UI is a Sparx Enterprise Architect AddIn. The platform can be deployed either on premises or on cloud.



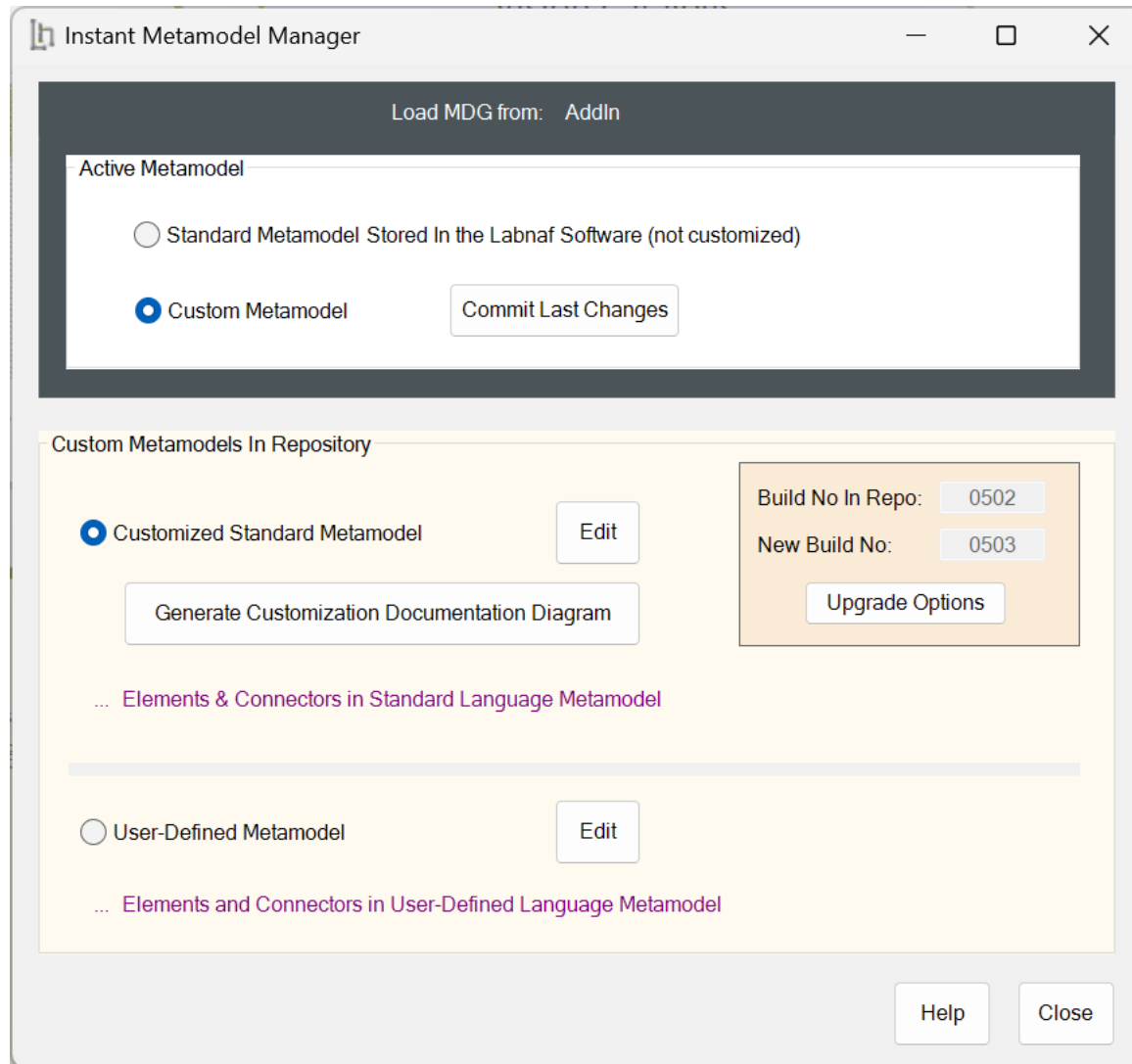
Instant Framework Customization

- Create/Rename/Delete Typed Properties
- Create/Delete Metamodel Connections
- Cascaded Calculation Rules
- Import/Export Scope & Formats
- Implicit Data Generation
- Dashboards
- Any Language Transformation to/from Labnaf
- Toolboxes, Diagram types... using Customization Workbench
- ...



Instant Metamodel Manager

Customization from the Labnaf Add-In



Instant Metamodel Manager

Load MDG from: AddIn

Active Metamodel

☐ Standard Metamodel Stored In the Labnaf Software (not customized)

☒ Custom Metamodel Commit Last Changes

Custom Metamodels In Repository

☒ Customized Standard Metamodel Edit

Generate Customization Documentation Diagram

Build No In Repo: 0502

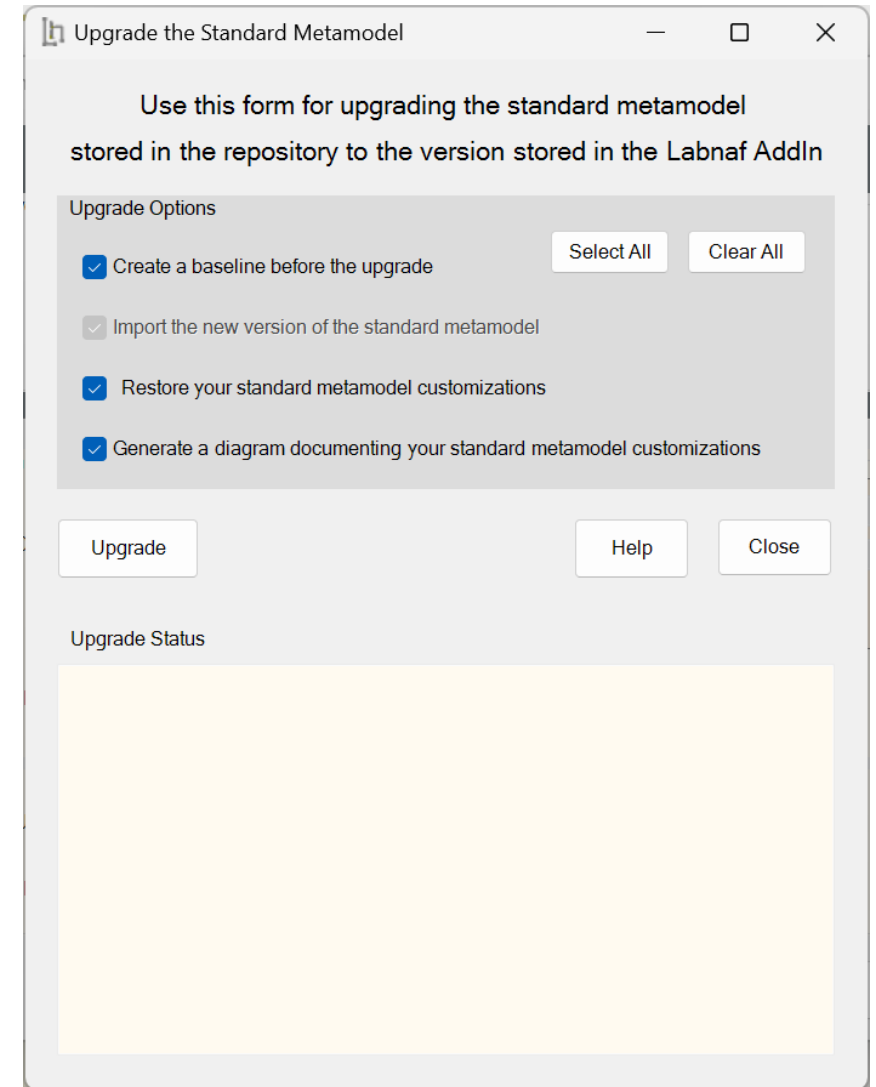
New Build No: 0503 Upgrade Options

... Elements & Connectors in Standard Language Metamodel

☐ User-Defined Metamodel Edit

... Elements and Connectors in User-Defined Language Metamodel

Help Close



Upgrade the Standard Metamodel

Use this form for upgrading the standard metamodel stored in the repository to the version stored in the Labnaf AddIn

Upgrade Options

☒ Create a baseline before the upgrade Select All Clear All

☐ Import the new version of the standard metamodel

☒ Restore your standard metamodel customizations

☒ Generate a diagram documenting your standard metamodel customizations

Upgrade Help Close

Upgrade Status



Instant Metadata Manager (for element properties)

Customization from the Labnaf Add-In

Instant Metadata Manager

Element Types and Properties

Element Types

☒ All Labnaf Element Types
☐ Customized Element Types

Access Point

Activity

Application

Application As A Service

Application Component

Application Deployment Set

Application Function

Application Group

Application Platform

Application Product

Application Service

Capability

Communication Network

Constraint

Contract

Cost Type

Customer Gain

Customer Job

Customer Pain

Customer Relationship Type

Data Object

Data Store

Demand

Distribution Network

Driver

End Event

Entity

Epic

Equipment

Equipment Function

Equipment Service

Equipment Type

Event

Facility

Feature

Functional Area

Functional Block

Functional Category

Properties @ LABN_Application

☒ Labnaf language properties
☒ Custom properties (in template package)
☒ Other (imported, calculated, uncategorized)

1 TO-BE

2 TRANSITION

3 AS-IS

Code

Criticality

Deployment_Status

Doc_Amount

Functional_Fit

In_Operation_End_Date

In_Operation_Start_Date

IT_Contact

IT_Contact_Delegates

Nb_Components

Nb_In_and_Out_Flows

Nb_Incidents

Nb_Supported_FBs

NB_Users

Pct_Unavailable

TCO

Technical_Fit

Vision

Refresh

New

Rename

Delete

Types of Repository Elements with Missing Properties

Labnaf language properties not found in

Application

Find Element Types Out Of Sync (missing properties)

Delete Duplicate Properties

Custom properties not found in

Project

Synchronize properties and constraints for SELECTED element types

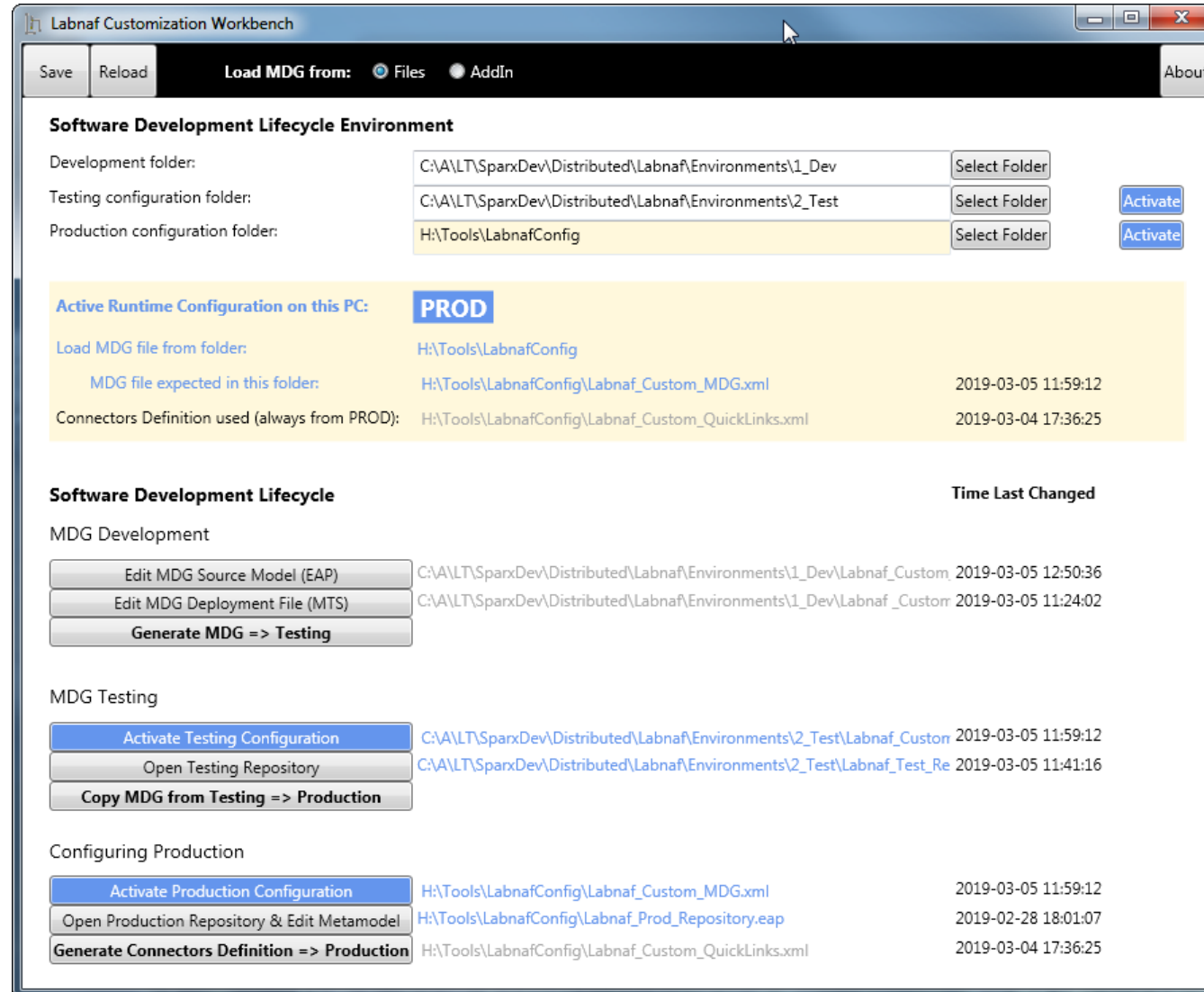
Synchronize properties and constraints for ALL element types

Help

Close

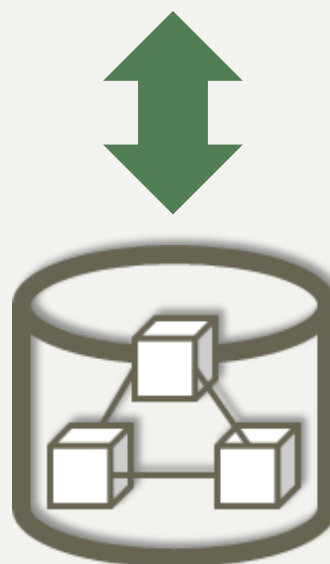


Advanced customizations of the modeling language (MDG) using the Labnaf Customization Workbench





Transform any language to/from Labnaf...

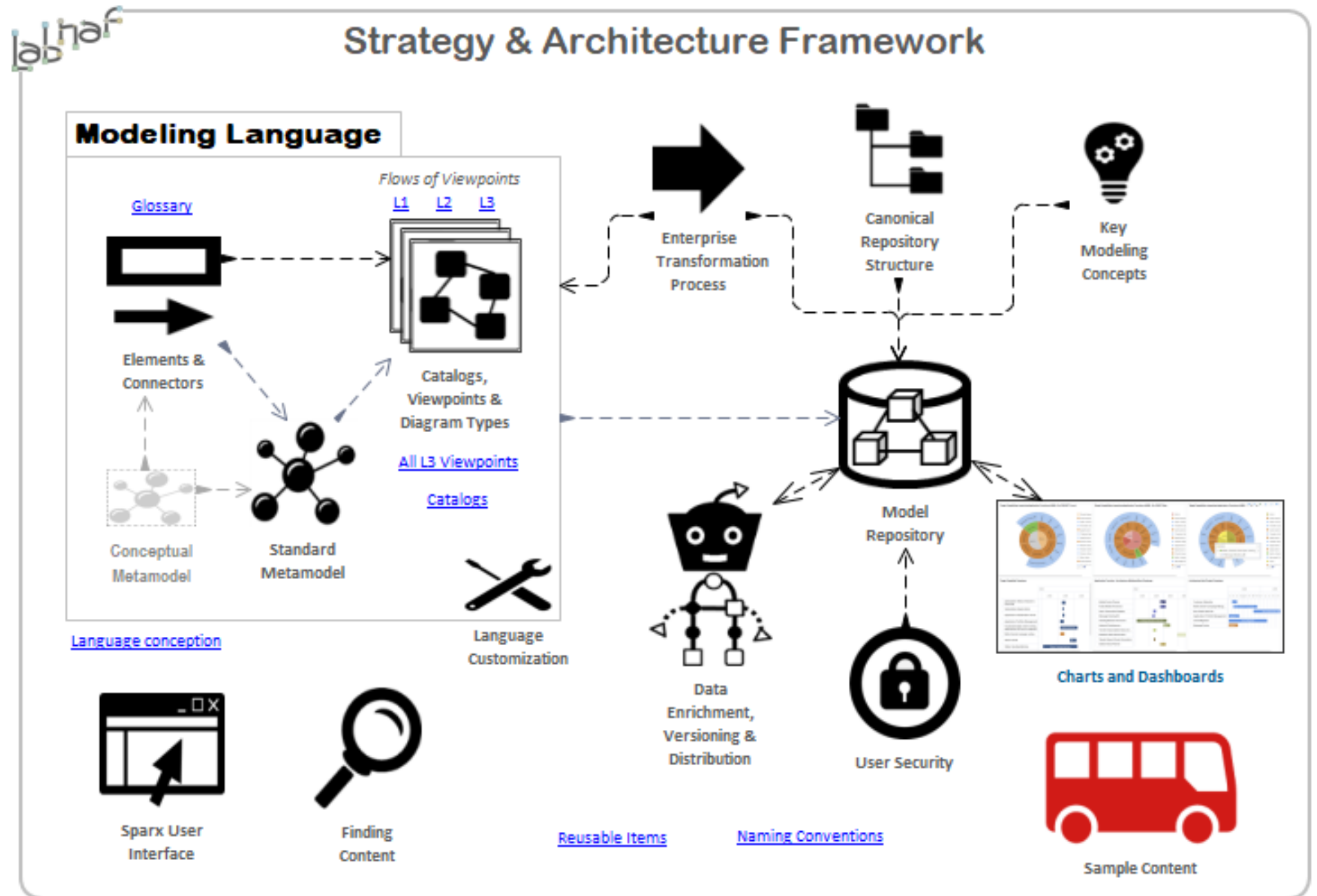


**We all speak the
same language**



End User Guidance

www.labnaf.one/guidance

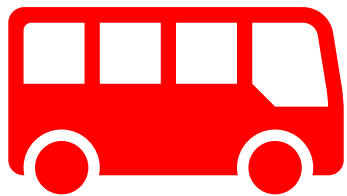


Agenda

1. What is Labnaf?
2. Why using Labnaf?
3. Key features
4. Demo

Appendix: As-is versus potential situation





BOPCO - The Bus Operating Company

BOPCO is facing some challenges. But there are also opportunities.

| | Internal | External |
|---------|--|--|
| Helpful | <div>STRENGTH</div> <ul style="list-style-type: none">• Ticketing anywhere on any device• Multimodal hubs | <div>OPPORTUNITIES</div> <ul style="list-style-type: none">• Improve punctuality by connecting to new public infrastructure optimizing traffic fluidity• Leverage mobile infrastructure to optimize customer loyalty and to attract new customers |
| Harmful | <div>WEAKNESSES</div> <ul style="list-style-type: none">• Punctuality• Losing customers returning to car• Difficult for customers to find the best itinerary | <div>THREATS</div> <ul style="list-style-type: none">• Decreasing public funding needed to adapt to sustainability and smart mobility |



Labnaf makes Digital Transformation visible and in motion



Strategist

Business Architect

Other
Architecture
Roles

Business Context
Business Models, Goals...

Value Streams...

Drive Changes to the Operating Model

Visible
Enterprise
Description

Strategy
Definition

Strategy
Execution

Project
Architecture

Detailed
Requirements, Design
& Implementation

Operational Info
Gaps...

Target Capabilities
Roadmaps...

Enterprise Architect

Solution Architecture...

Solution Design...

Designer
(Software, Robotics...)

Solution Architect

Technical Info & Gaps

Approved Solutions

Implemented Solutions

