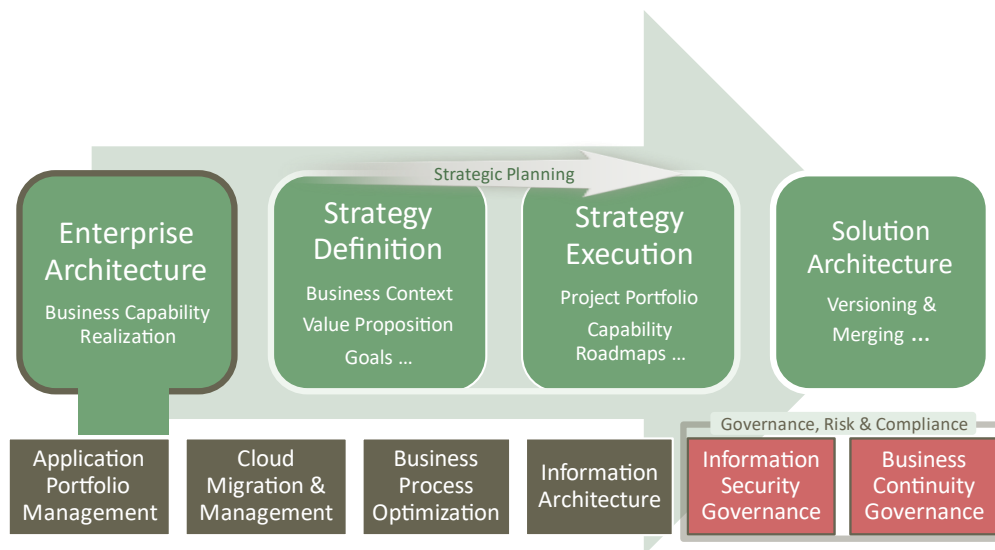


Labnaf 7.0 Product Line

Labnaf is a software and unified framework for visualizing your enterprise, for driving transformations and for managing sensitive information. It brings productivity, consistency and cross-discipline collaboration by merging and extending standards into one single process, modeling language and software. Labnaf helps you understand your organization, envision its future, plan transformations and describe architecture solutions using multi-dimensional models, charts, analysis and reports. The framework and the software are highly and easily customizable.

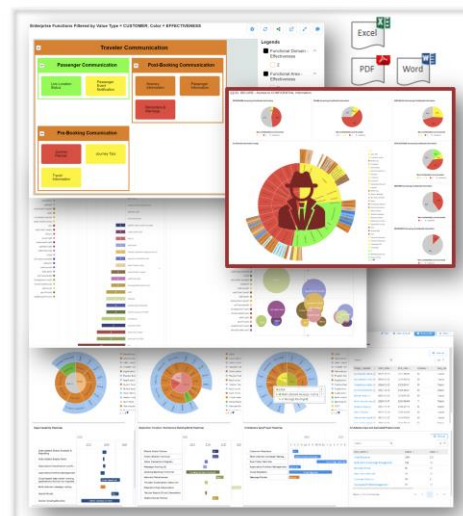
The software implementation is provided as a robust [Sparx System's](#) software extension (Sparx EA and Prolaborate as an option). The scalable repository provides numerous concurrent users with enterprise visibility and traceability across many dimensions.



Drive Transformations and Manage Risks

- Navigable Business Capability Heat Maps using cascaded consolidations
- Application, Equipment and Technology Portfolio Management
- Application Lifecycle Management
- Business Continuity Governance and Trends
- Information Architecture, Classification & Usage
- 360° View on Sensitive Information Usage and Risks
- Strategy Definition & Executions (Roadmaps)
- Architecture Management
- ...

Sample Dashboards: <https://www.labnaf.one/in-content/dashboards>



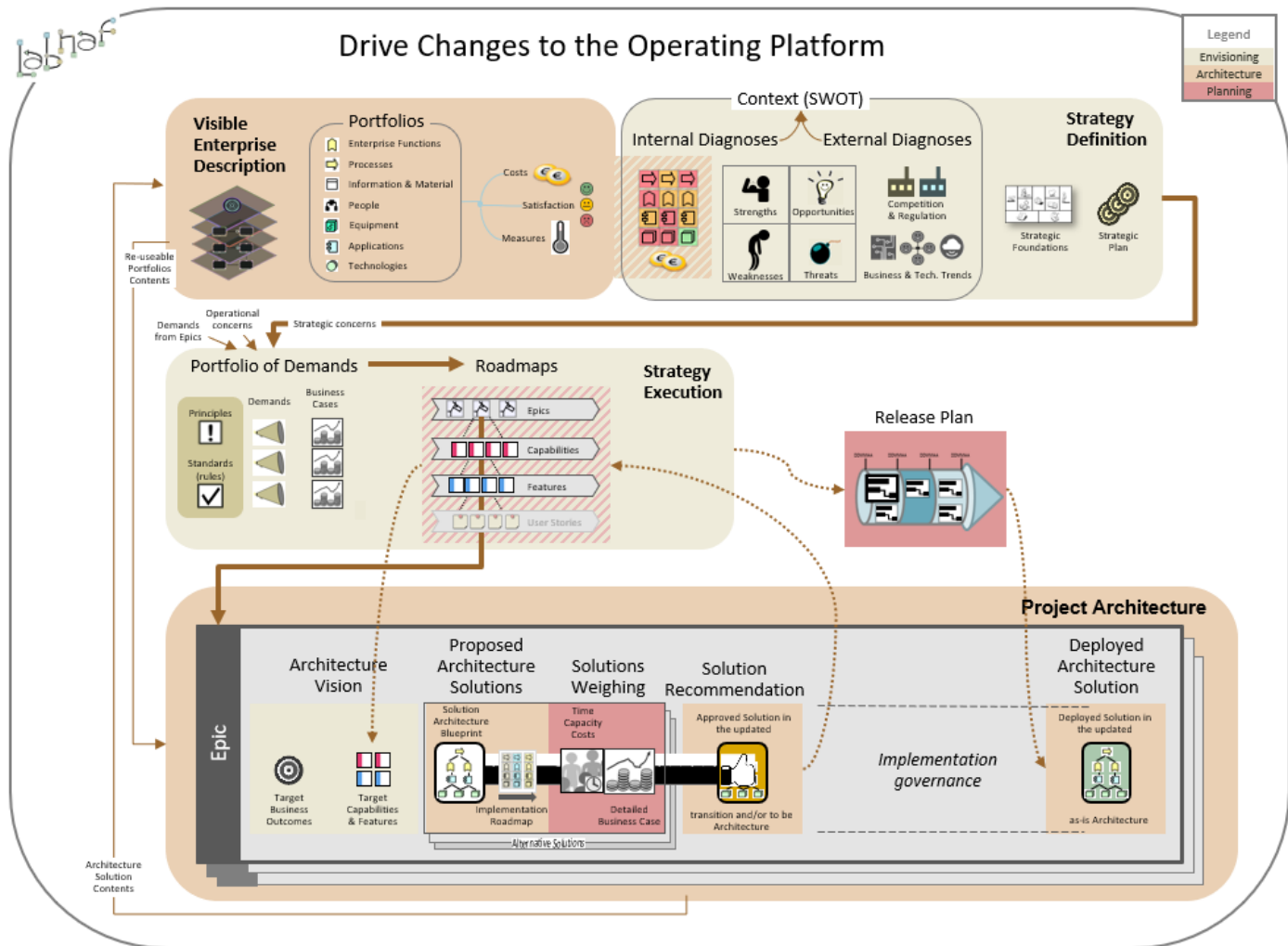
The Labnaf Process of Driving Transformations

The transformation framework is used for architecting and diagnosing portfolios of information, physical material, processes, enterprise functions, organizations, applications, technologies and equipment.

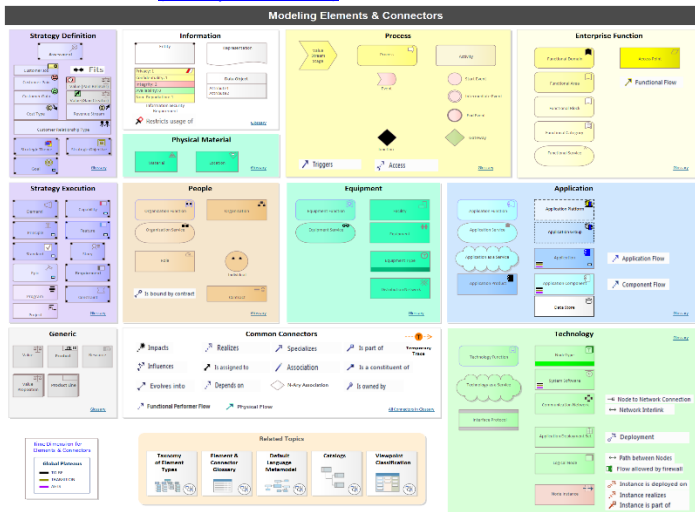
It is also used for envisioning, planning and formalizing changes, for end-to-end solution architecture modeling, and for organizing and automating architecture governance.

Miscellaneous industry patterns can be naturally addressed including IoT, ecosystems, cloud and information privacy.

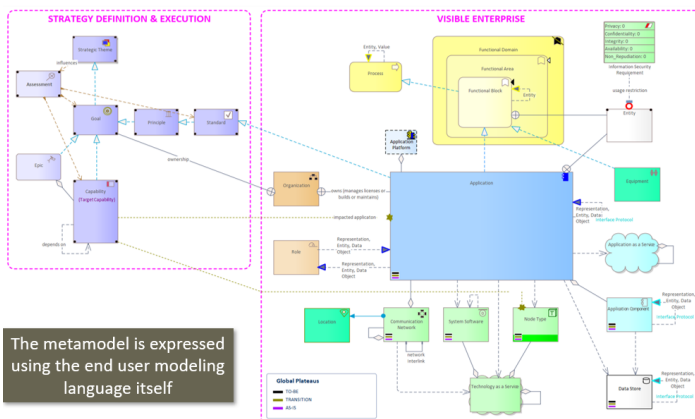
The framework is simple, practical and easily configurable, while covering a large spectrum of business transformation concerns. It enables visibility and traceability at several manageable levels of detail.



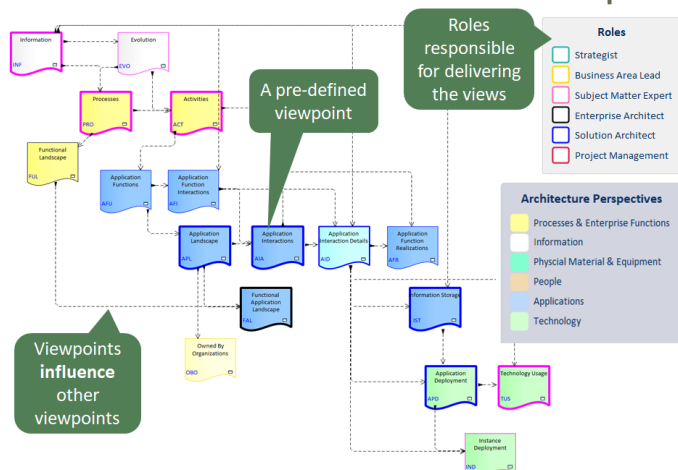
Labnaf Addin ([Multiple editions](#))



A Subset of the Metamodel including
Strategy & **Enterprise** Architecture

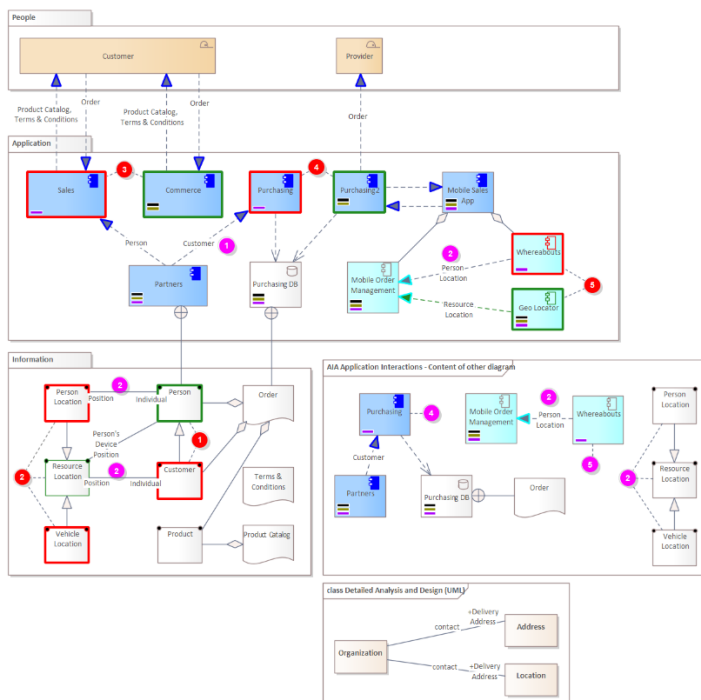
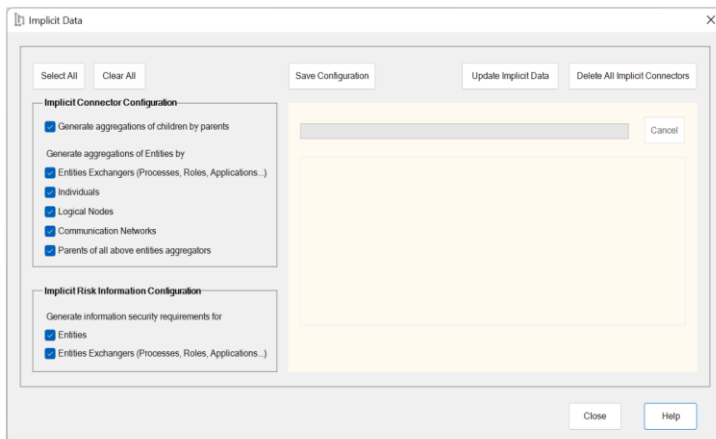
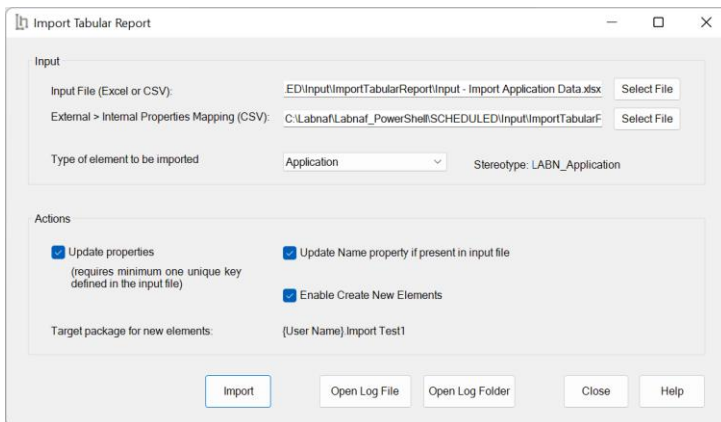


Scenario: IT Architecture Solution Description



The package includes

- Unified Transformation Process, Language, Repository and Tools
- Unified transformation disciplines covering the scope of 20+ standards & best practices ([ArchiMate](#), [BPMN](#), [PESTEL Analysis](#), [Porter's Five Forces Analysis](#), [Value Proposition Canvas](#), [Business Model Canvas](#), [Strategy Map & Balanced Scorecard](#), [SAFe](#), [Gartner EA Stage Planning](#), [BIZBOK](#), [ISO/IEC/IEEE 42010](#), [TOGAF](#), [ISO27000](#), [GDPR](#) ...).
- 40+ portfolios integrated in a single repository and tools
- 70+ viewpoints orchestrated by an end-to-end transformation process and by scenarios
- Fully fledged Labnaf startup and sample repositories
- Portfolios management can support large organizations with sub-organizations, distribution of responsibilities across architecture segments, all in a secure fashion (Read / Read-Write).
- Instant Metamodel Manager and Instant Metadata Manager supporting simple and quick framework customizations including on Enterprise Architect SaaS (Cloud Platform ready to go)
- Customization Workbench for advanced customizations of the Labnaf modeling language and tools.
- On-line <=> Off-line access to customized languages, even when creating new repositories
- Excel and CSV import (create, update, identifying elements following multiple criteria). Use internal and/or external primary keys. Easily adapting to your systems-specific character set/code page and



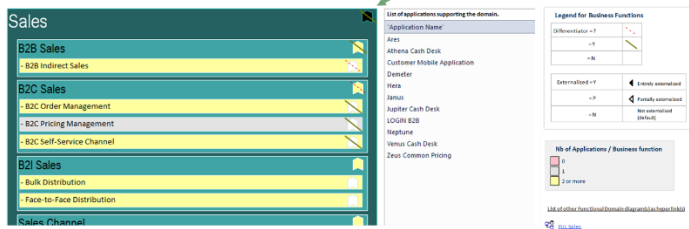
column separators. Quick, user-friendly, and flexible

- Dynamic model validation
- Repository content rationalization including automatic content relocation.
- Merge Versions of Elements & Connectors (merge redundant items)
- Implicit data generation including connectors, sensitive information requirements, scope of data processing (applying ISO 27000, NISDUC and GDPR). Provides 360° view on information usage.
- Cascaded value calculations from very simple to very complex functions combining properties, connections, and time series
- Application Portfolio diagram generation following templates defined in the Labnaf model repository
- Rich Excel and CSV report generation including connections, consolidated/indirect connections, color grading, grouping, filters. Generation based on templates stored in the repository or custom reports. Quick, user-friendly, and flexible
- Quick update of a same property for a selected list of elements or packages
- Predefined charts and dashboards (for both Sparx EA and Prolaborate)
- Sample templates for value calculations, chart generation, Excel generation and CSV generation
- Generic and specific document templates for Word, PDF, RTF generation (SAD, principles, standards, etc.)
- Scope of Labnaf processing: Generate Excel and CSV reports, calculate values or generate charts for a selection of elements of your choice
 - for elements or packages selected in the project browser,
 - or for elements or packages selected in the active diagram,

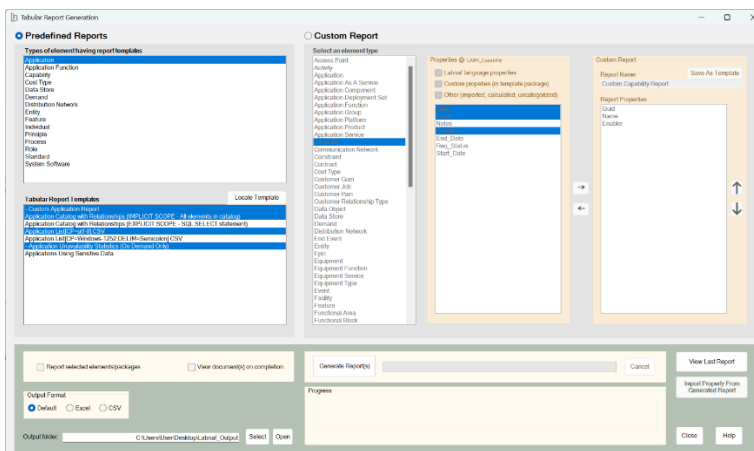
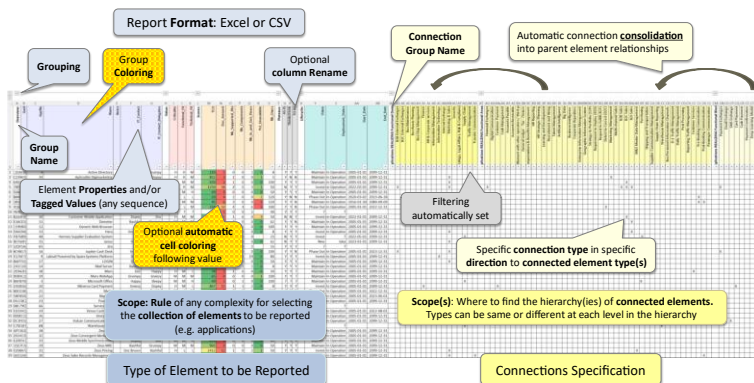
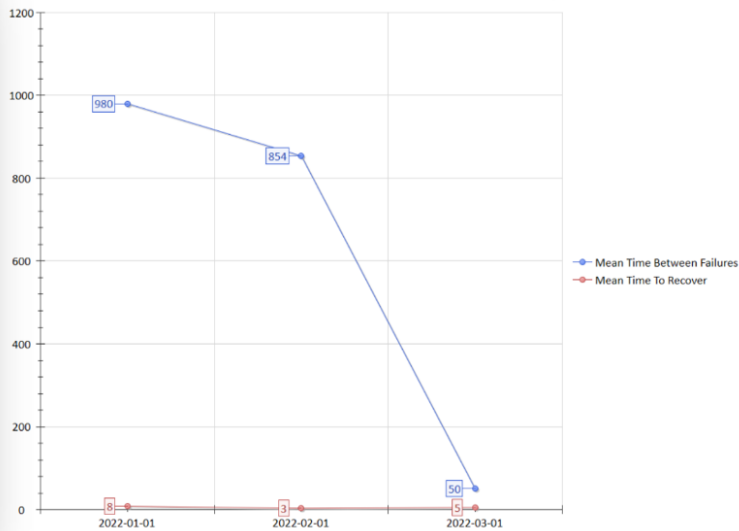
Generate diagrams

Scheduled or On demand

Real navigable model elements
(automatically resized following context)

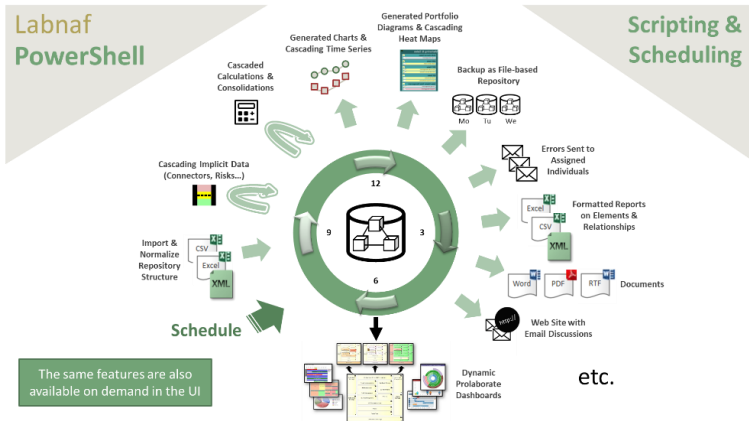


Application Incident Mean Times - Athena Order Management



- of for elements and packages present in a “scope” diagram that belongs to each template,
- or based on a specific SQL select defined in each template,
- or for the entire catalog (default).
- Labnaf template for HTML generation
- Quickly add (auto diagram-coloring) legends to one or multiple diagrams in a row using the legend library management features
- Labnaf Language Transformer to transform any modeling language into any other one

Labnaf PowerShell



Data Enrichment and Distribution for Enterprise Visualization

Data is Automatically Enriched...

- Import data from different sources
- Cascade calculation and identify information risks
- Generate diagrams & Implicit Connectors
- Normalize the repository structure
- Export to other systems and repositories

and Presented in Dashboards & Reports

All models and charts are reusable. Because there is one single language, metamodel and repository structure



Scheduled/batch operations for architecture industrialization and governance.

Generation

- Diagram and chart generation following Labnaf templates defined in the Labnaf model repository.
- Excel and CSV generation following Labnaf Excel templates
- Word, PDF, RTF generation following Labnaf templates.
- Publication to an HTML site where pages can be shared using standard e-mails.
- Implicit data generation and 360° view on information usage.

Advanced Repository Synchronization, Refactoring and Normalization

- Advanced repository content synchronization
- Automatic repository content refactoring and normalization
- Diagram selection (any criteria) for automatic locking and connector freezing...

Calculation

- Cascaded value calculation following templates defined in the Labnaf model repository.

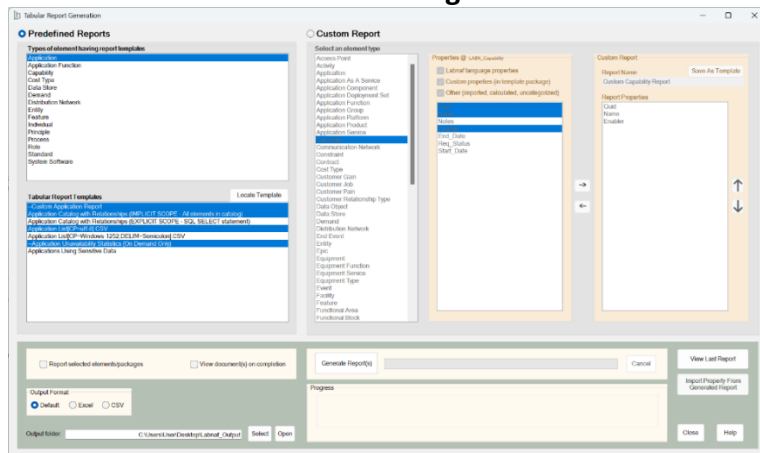
Model validation

- Invalid connector detection and email error reports distribution

Backup

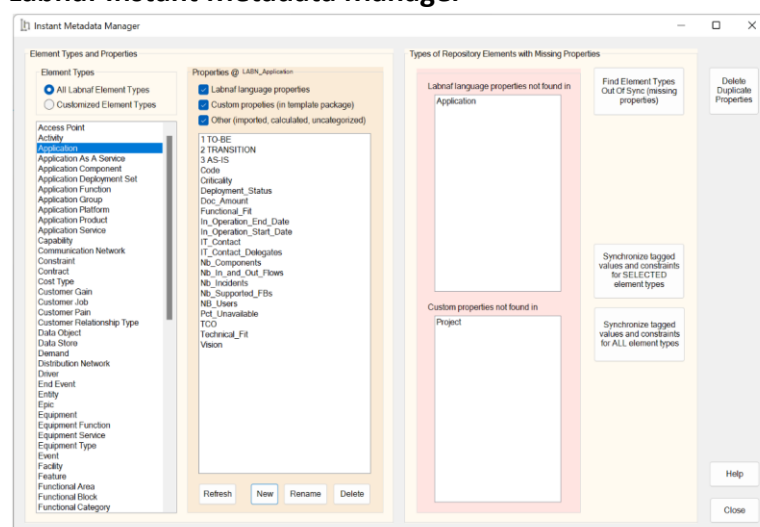
- To local model repository.

Labnaf Instant Metamodel Manager



Use the Instant Metadata Manager to instantly manage custom properties that live independently of any future version of the Labnaf language. So, there is no upgrade issues.

Labnaf Instant Metadata Manager

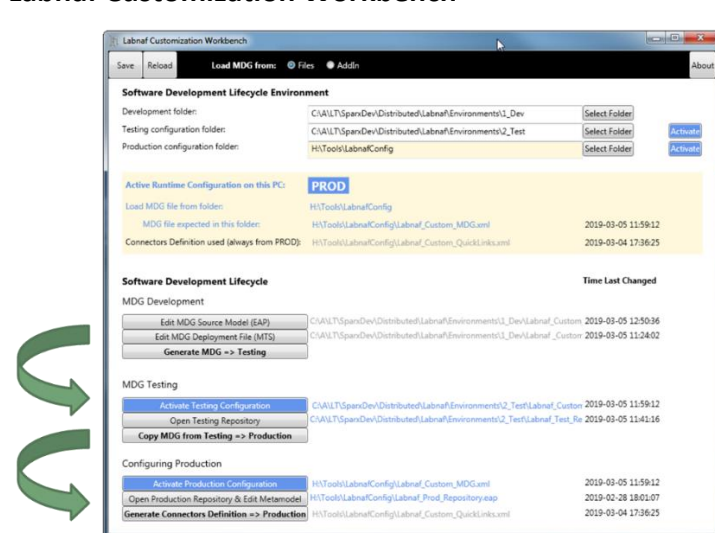


Use the Instant Metamodel Manager to instantly manage custom metamodels.

Custom standard metamodels can be merged or not with future versions of the Labnaf language. So, there is no upgrade issues.

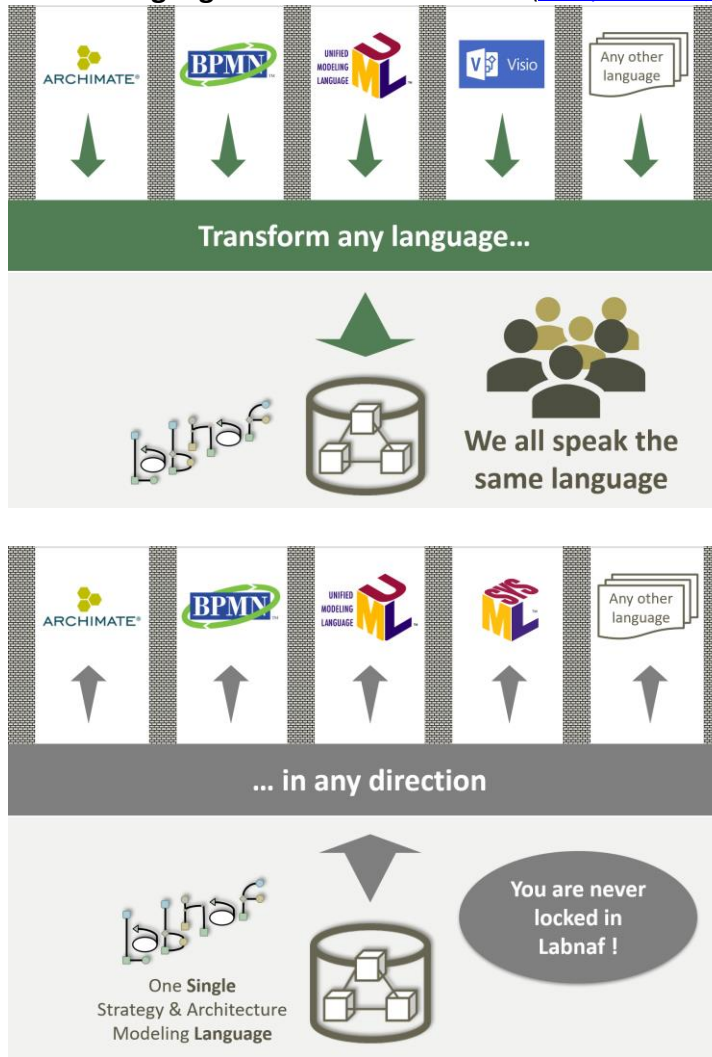
Because the Instant Metamodel Manager and Instant Metadata Manager are available directly in the modeling environment, you don't need any extra tool. This is the perfect option for modeling in an **Enterprise Architect SaaS environment (cloud)**.

Labnaf Customization Workbench



A User Interface orchestrating advanced Labnaf customizations (Development, Testing, Production)

Labnaf Language Transformation Tools [\(Multiple editions\)](#)



Automatic transformation, in a repository, of existing modeling elements and connectors in terms of types, stereotypes and tagged values.

Enables translation of any language like ArchiMate, BPMN or UML into any other language e.g. Labnaf (and vice versa).

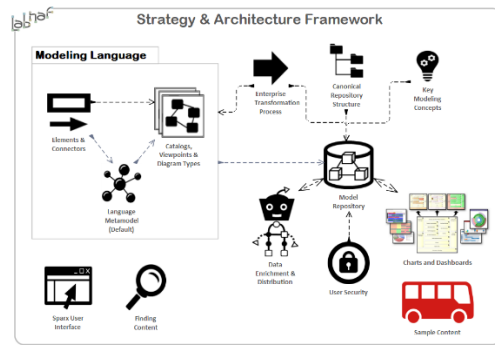
This includes imports from Visio or Archi.

Labnaf Repositories [\(provided with specific software and editions\)](#)

Labnaf Startup Repository Extralite	Initial model repository structure including <ul style="list-style-type: none"> Configurable repository structure of portfolios, catalogs, sample elements, sample views, and reusable auto-coloring legends accessible via a dedicated menu 	<ul style="list-style-type: none"> Dashboards <ul style="list-style-type: none"> Visible Enterprise Dashboards Strategy Definition Dashboards Strategy Execution Dashboards Project Architecture Dashboards Architecture Management Dashboards { } Strategy & Architecture Framework <ul style="list-style-type: none"> Canonical Repository Structure Sample Content Reusable Items (Including Legends) Configuration { } Version 5.0 Visible Enterprise <ul style="list-style-type: none"> Information Physical Material Process Enterprise Function People <ul style="list-style-type: none"> Organization Functions Roles
Labnaf Startup Repository	Adds the following items to the Labnaf Startup Model Repository Extralite: <ul style="list-style-type: none"> Model templates for configuring value calculations Configurable templates for charts and diagram generation Model templates for tabular reports (generated Excel documents) 	

	<ul style="list-style-type: none"> • Customizable default metamodel including navigable documentation • A configurable language metamodel with dynamic alignment of the model validation rules • Sample steps for you Enterprise Architecture metamodel evolution • Placeholder and initial content for you own metamodel (if you want to replace the default metamodel) • Model templates for configuring value initialization • Document templates for solution architecture, principles, standards and other document types. Generated format: Word, PDF, RTF. • Configurable element and connector type documentation • Configurable viewpoint documentation • Configurable flows of viewpoints • Configurable sets of mandatory viewpoints following different scenarios (e.g. project types). Used also for crating dynamic project dashboards showing existing and missing mandatory viewpoints. 	
Labnaf Sample Repository	<p>Adds the following items to the Labnaf Startup Model Repository:</p> <ul style="list-style-type: none"> • Extensive examples of Labnaf model repository content. • Collection of predefined charts and dashboards for enterprise visualization, application portfolio management, strategy definition, strategy execution and project/solution architecture 	

Labnaf Guidance Repository



Adds the following items to the Labnaf Sample Model Repository:

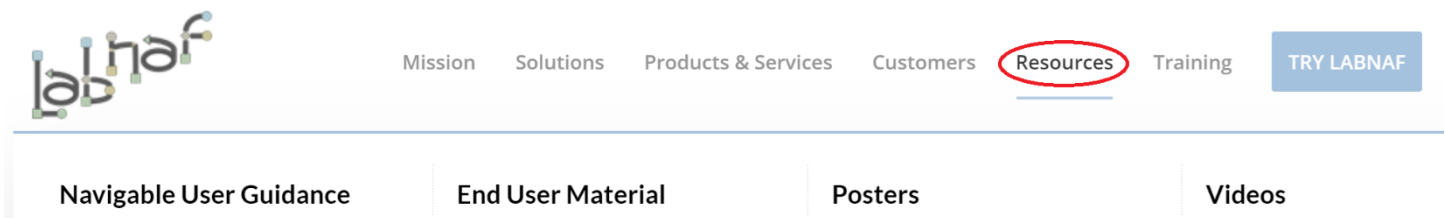
- Navigable and customizable Labnaf end user guidance

This is the original model repository from which the [online guidance](#) is generated. Enables easy search, navigation and even customization of the guidance.

To be deployed on a separate database so that search and navigation focus on the guidance only.

Labnaf Resources

The Labnaf web site (www.labnaf.one), the [self-paced trainings on Udemy](#), and the [Labnaf Channel on YouTube](#) provide extensive documentation on the actionable Labnaf strategy and architecture framework including its built-in transformation process, modeling language, model repository, modeling environment and tools. See also the [Labnaf training catalog](#).



Using Labnaf software as a server: If you are planning to use some Labnaf software in combination with Sparx System's Enterprise Architect as a Server, please read Sparx System's "Requirements and Conditions for Using Enterprise Architect as a Server based application" which are available on this page:
<https://sparxsystems.com/products/ea/server-legal.html>